

WAAS CH <b>81918</b> <b>W22A</b>	APP CRS <b>221°</b>	Rwy Idg TDZE Apt Elev	<b>6498</b> <b>164</b> <b>170</b>
--	------------------------	-----------------------------	---

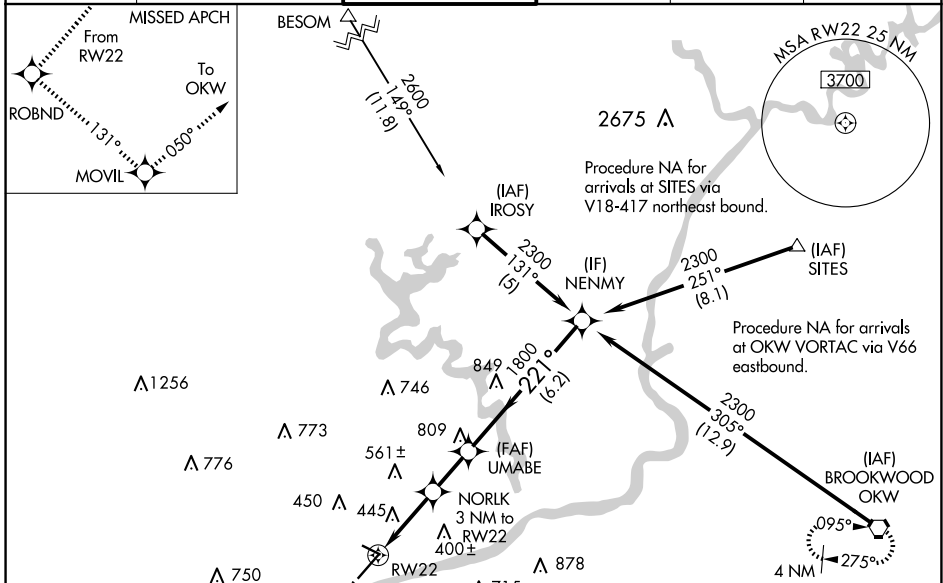
# RNAV (GPS) RWY 22

TUSCALOOSA NTL (TCL)

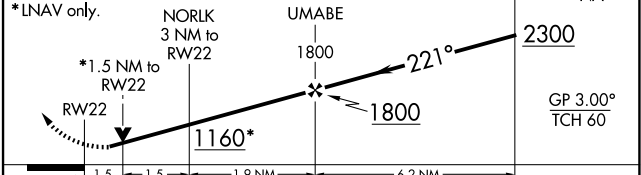
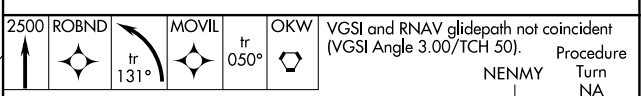
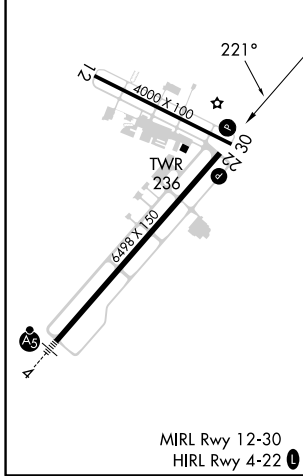
**▼** For uncompensated Baro-VNAV systems, LNAV/VNAV NA below -15°C (5°F) or above 48°C (118°F). DME/DME RNP-0.3 NA. Helicopter visibility reduction below 3/4 SM NA. When local altimeter setting not received, use Birmingham altimeter setting: increase LPV DA to 760 feet and all visibilities 1/2 SM; increase LNAV/VNAV DA to 937 feet and all visibilities 3/4 SM; increase all MDAs 180 feet and visibility LNAV Cats C and D 1/2 SM and Circling Cat C 3/4 SM and Cat D 1/2 SM. Baro-VNAV and VDP NA when using Birmingham altimeter setting. Circling Rwy 12, 30 NA at night.

**MISSED APPROACH:** Climb to 2500 direct ROBND and left turn on track 131° to MOVIL and on 050° track to OKW VORTAC and hold.

ASOS <b>132.825</b>	BIRMINGHAM APP CON <b>120.15 269.25</b>	TUSCALOOSA TOWER ★ <b>126.3 (CTAF) 0 256.7</b>	GND CON <b>121.8 257.95</b>	CLNC DEL <b>120.775</b>	UNICOM <b>122.95</b>
------------------------	--	---	--------------------------------	----------------------------	-------------------------



ELEV 170	TDZE 164
----------	----------



CATEGORY	A	B	C	D
LPV DA		582-1 1/2	418 (500-1 1/2)	
LNAV/VNAV DA		759-2	595 (600-2)	
LNAV MDA	700-1	536 (600-1)	700-1 1/2 536 (600-1 1/2)	700-1 3/4 536 (600-1 3/4)
CIRCLING	720-1 550 (600-1)	800-1 630 (700-1)	960-2 1/4 790 (800-2 1/4)	960-2 1/2 790 (800-2 1/2)

SE-4, 20 FEB 2025 to 20 MAR 2025

SE-4, 20 FEB 2025 to 20 MAR 2025