

# BESSA TWO DEPARTURE (RNAV) (BESSA2.BESSA)

TRAVIS AFB (KSUU)  
FAIRFIELD, CALIFORNIA

Rwy	Knots	60	120	180	240	300	360
*3R (C)	V/V(fpm)	201	402	603	804	1005	1206
† 3R (C)	V/V(fpm)	295	590	885	1180	1475	1770
† 3L (C)	V/V(fpm)	299	598	897	1196	1495	1794
*21L/RC	V/V(fpm)	220	440	660	880	1100	1320
†21R (C)	V/V(fpm)	277	554	831	1108	1385	1662
† 21L (C)	V/V(fpm)	280	560	840	1120	1400	1680

\* Minimum † ATC Climb Rate

- (C) to 500
- (C) to BESSA to 8000
- (C) to 4000

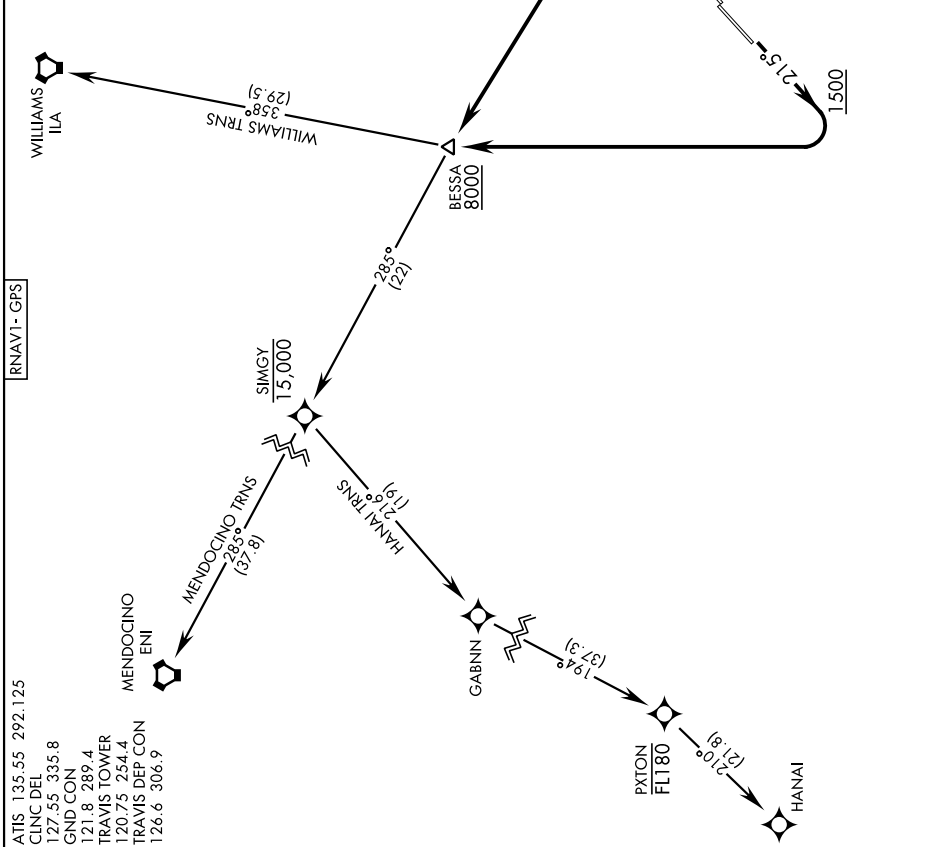
[USAF]

**DEPARTURE ROUTE DESCRIPTION**

**TAKEOFF RWY 3L/R:** Climb on heading 035° to 1500, then left turn direct to cross BESSA at or above 8000. Thence...

**TAKEOFF RWY 21L/R:** Climb on heading 215° to 1500, then right turn direct to cross BESSA at or above 8000. Thence...  
...via assigned transition. Maintain ATC assigned altitude.

HANAI TRANSITION (BESSA2.HANAI)  
MENDOCINO TRANSITION (BESSA2.ENI)  
WILLIAMS TRANSITION (BESSA2.ILA)



ATIS 135.55 292.125  
 CINC DEL 127.55 335.8  
 GND CON 121.8 289.4  
 TRAVIS TOWER 120.75 254.4  
 TRAVIS DEP CON 126.6 306.9

# BESSA TWO DEPARTURE (RNAV) (BESSA2.BESSA)

Orig 11JUL24

FAIRFIELD, CALIFORNIA  
TRAVIS AFB (KSUU)

SW-2, 20 FEB 2025 to 20 MAR 2025

SW-2, 20 FEB 2025 to 20 MAR 2025