

PEBLL TWO ARRIVAL (RNAV)

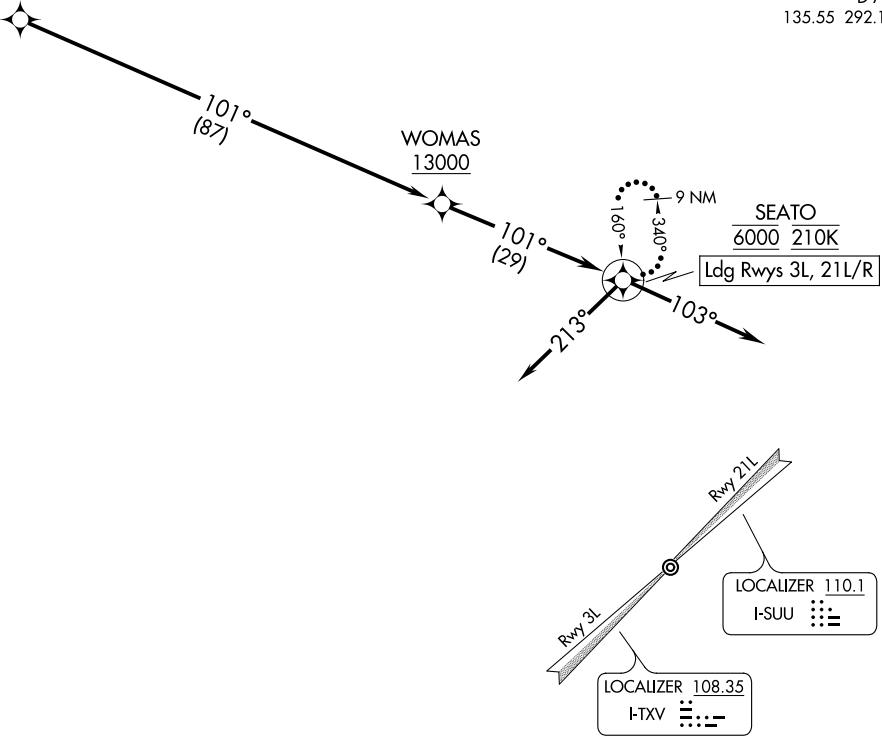
AL-488 (FAA)

TRAVIS AFB (KSUU)
FAIRFIELD, CALIFORNIA

RNAV 1 - DME/DME/IRU or GPS.
RADAR required.

TRAVIS APP CON
126.6 281.45 (N)
119.9 322.325 (S)
TRAVIS TOWER
120.75 254.4
GND CON
121.8 289.4
D-ATIS
135.55 292.125

PEBLL
FL290



NOTE: Chart not to scale.

ARRIVAL ROUTE DESCRIPTION

From PEBLL on track 101° to cross WOMAS at or above 13000.

LANDING RUNWAY 3L: From WOMAS on track 101° to cross SEATO at 6000 and at 210K, then on heading 213°. Expect RADAR vectors to final approach course.

LANDING RUNWAY 21L/R: From WOMAS on track 101° to cross SEATO at 6000 and at 210K, then on heading 103°. Expect RADAR vectors to final approach course.

LOST COMMUNICATIONS: From SEATO, execute ILS or LOC RWY 21L or TACAN RWY 3L approach. If unable, hold at SEATO as depicted, maintain 6000.

PEBLL TWO ARRIVAL (RNAV)