

VORTAC RSK <b>115.3</b> Chan <b>100</b>	APP CRS <b>252°</b>	Rwy Idg TDZE <b>5507</b> Apt Elev <b>5507</b>
---	------------------------	---

# VOR RWY 25

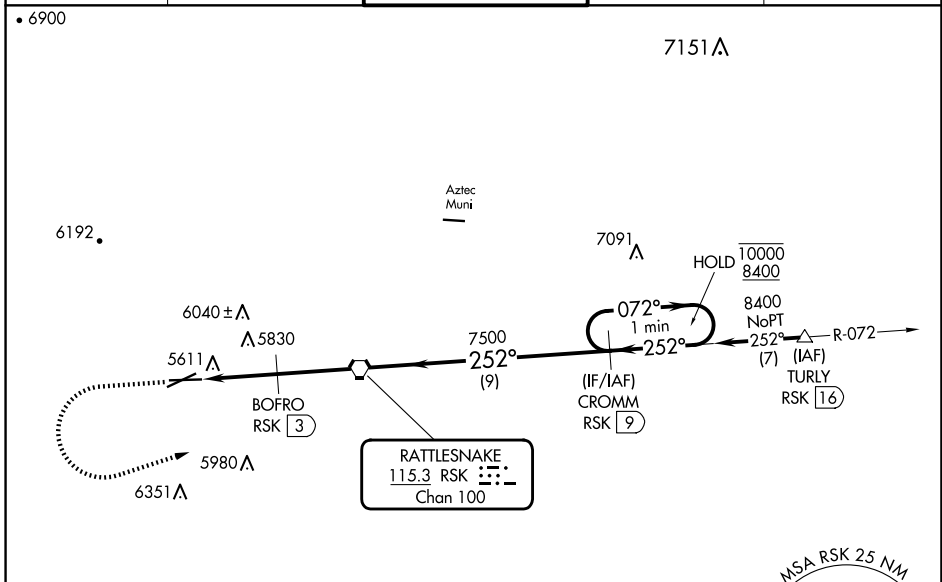
FOUR CORNERS RGNL (FMN)

DME required.

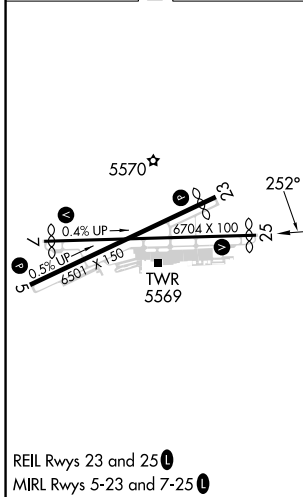
**⚠** VDP NA when using Durango-La Plata County altimeter setting. Circling NA for Cat D southeast of Rwy 5 and south of Rwy 25. When local altimeter setting not received, use Durango-La Plata County altimeter setting and increase all MDAs 260 feet; increase S-25 visibility Cat B/C/D 7/8 SM and Circling visibility Cat A/B/C 1/2 SM.

MISSED APPROACH: Climb to 7100 then climbing left turn to 8400 on heading 060° and on RSK VORTAC R-072 to CROMM/9 DME and hold.

ATIS <b>127.15</b>	DENVER CENTER <b>118.575 348.7</b>	FARMINGTON TOWER★ <b>118.9 (CTAF) 0 257.8</b>	GND CON <b>121.7</b>	UNICOM <b>122.95</b>
-----------------------	---------------------------------------	--	-------------------------	-------------------------



ELEV <b>5507</b>	<b>D</b>	TDZE <b>5507</b>
------------------	----------	------------------



7100 8400 hdg 060° RSK R-072 CROMM RSK 9 One Minute Holding Pattern 072° → 10000 ← 252° 8400 RSK VORTAC BOFRO RSK 3 3.18° TCH 56 7500 6500 RSK 5.8 RSK 4.1 -1.6 NM -1.2 -3 NM -9 NM	MSA RSK 25 NM			
	9700	7800	8700	090° 270° 360°
CATEGORY	A	B	C	D
S-25	6080-1	573 (600-1)	6080-1½	573 (600-1½)
CIRCLING	6080-1 573 (600-1)	6140-1 633 (700-1)	6380-2½ 873 (900-2½)	6460-3 953 (1000-3)

SW-1, 20 FEB 2025 to 20 MAR 2025

SW-1, 20 FEB 2025 to 20 MAR 2025