

(FOLZZ3.FOLZZ) 24081
FOLZZ THREE DEPARTURE (RNAV)

AL-494 (FAA)

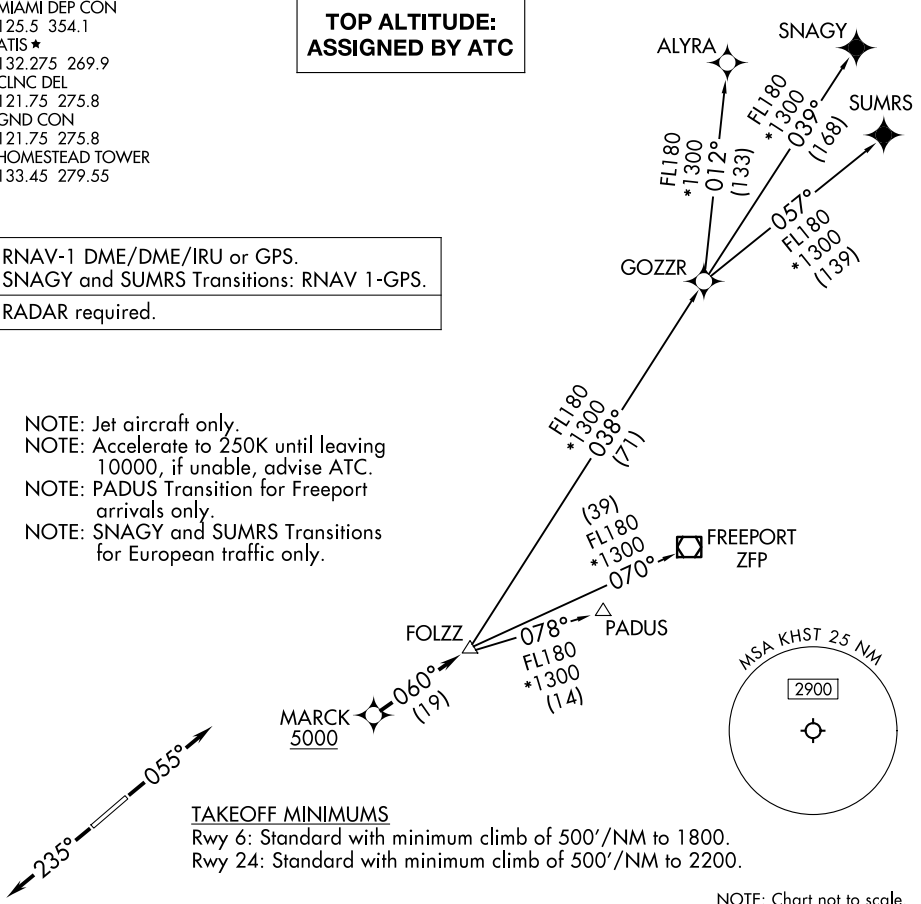
HOMESTEAD ARB (KHST)
 HOMESTEAD, FLORIDA

MIAMI DEP CON
 125.5 354.1
 ATIS ★
 132.275 269.9
 CLNC DEL
 121.75 275.8
 GND CON
 121.75 275.8
 HOMESTEAD TOWER
 133.45 279.55

**TOP ALTITUDE:
 ASSIGNED BY ATC**

RNAV-1 DME/DME/IRU or GPS.
 SNAGY and SUMRS Transitions: RNAV 1-GPS.
 RADAR required.

NOTE: Jet aircraft only.
 NOTE: Accelerate to 250K until leaving
 10000, if unable, advise ATC.
 NOTE: PADUS Transition for Freeport
 arrivals only.
 NOTE: SNAGY and SUMRS Transitions
 for European traffic only.



TAKEOFF MINIMUMS
 Rwy 6: Standard with minimum climb of 500'/NM to 1800.
 Rwy 24: Standard with minimum climb of 500'/NM to 2200.

NOTE: Chart not to scale.

DEPARTURE ROUTE DESCRIPTION

TAKEOFF RUNWAY 6: Climb on heading 055° or as assigned by ATC for RADAR vectors to cross MARCK at or above 5000, thence. . .
TAKEOFF RUNWAY 24: Climb on heading 235° or as assigned by ATC for RADAR vectors to cross MARCK at or above 5000, thence. . .
 . . .on track 060° to FOLZZ, then on assigned transition. Maintain ATC assigned altitude, expect filed altitude within 10 minutes after departure.

- ALYRA TRANSITION (FOLZZ3.ALYRA)
- FREEPORT TRANSITION (FOLZZ3.ZFP)
- GOZZR TRANSITION (FOLZZ3.GOZZR)
- PADUS TRANSITION (FOLZZ3.PADUS)
- SNAGY TRANSITION (FOLZZ3.SNAGY)
- SUMRS TRANSITION (FOLZZ3.SUMRS)

FOLZZ THREE DEPARTURE (RNAV)
 (FOLZZ3.FOLZZ) 21MAR24

HOMESTEAD, FLORIDA
 HOMESTEAD ARB (KHST)

SE-3, 20 FEB 2025 to 20 MAR 2025

SE-3, 20 FEB 2025 to 20 MAR 2025