

HI-ILS or LOC Y RWY 6

LOC I-HST 109.9	APCH CRS 055°	Rwy Idg 11,201 TDZE Arprt Elev 6
---------------------------	-------------------------	--

AL-494 [USAF]

HOMESTEAD ARB (KHST)

RADAR or DME required.



MISSED APPROACH: Climb to 800 then climbing right turn to 3000 intercept HST TACAN R-180 to JOMIN and hold.

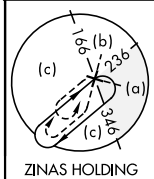
ATIS ★
132.275 269.9

APP CON
123.8 257.675

TOWER
133.45 279.55

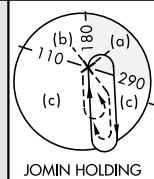
GND CON
121.75 275.8

CLNC DEL
121.75 275.8



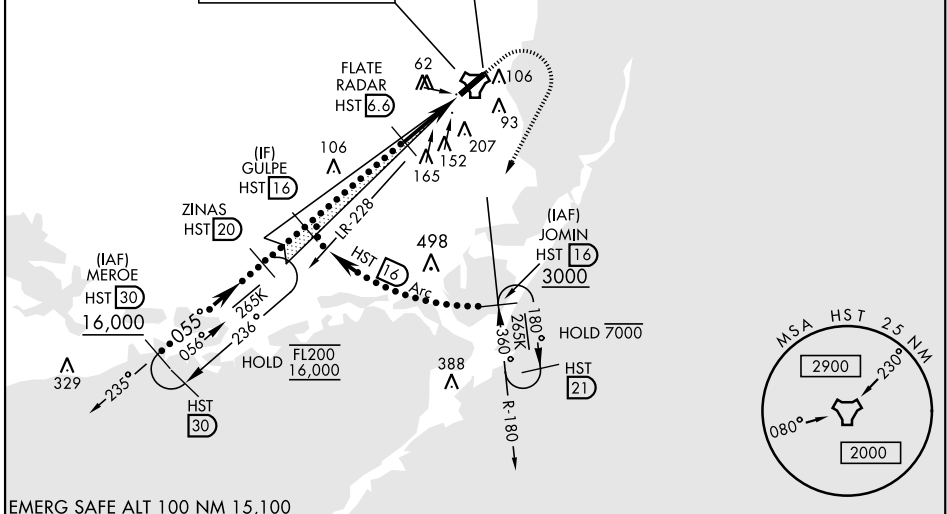
CAUTION: Heliport and stadium 2.2 NM final Rwy 6 at Homestead ARB (stadium may be lit after dark).

Misled approach requires use of RNAV or ATC RADAR monitoring.



HOMESTEAD
Chan 19 HST

LOCALIZER 109.9
I-HST



EMERG SAFE ALT 100 NM 15,100

	ELEV 6		TDZE 5	
	HIRL Rwy 6-24		JOMIN HST 16	
GS 2.50° TCH 54	5 NM		0.4 NM	
CATEGORY	C	D	E	
S-ILS 6 *	205/24	200 (200-½)		
S-LOC 6 **	460/45	455 (500-7%)		
*** CIRCLING	520-1½ 514 (600-1½)	580-2 574 (600-2)	780-2¾ 774 (800-2¾)	
			FAF to MAP 5.0 NM	
			Knots	120 140 160 180 200
			Min:Sec	2:30 2:09 1:53 1:40 1:30

HI-ILS or LOC Y RWY 6

SE-3, 20 FEB 2025 to 20 MAR 2025

SE-3, 20 FEB 2025 to 20 MAR 2025