

HOMESTEAD, FLORIDA

ILS or LOC Z RWY 6

LOC I-HST 109.9	APCH CRS 055°	Rwy Idg 11,201 TDZE 5 Arprt Elev 6
---------------------------	-------------------------	---

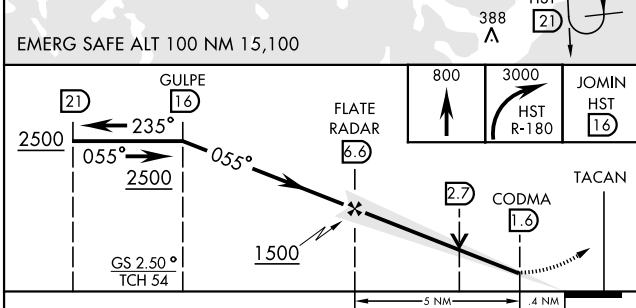
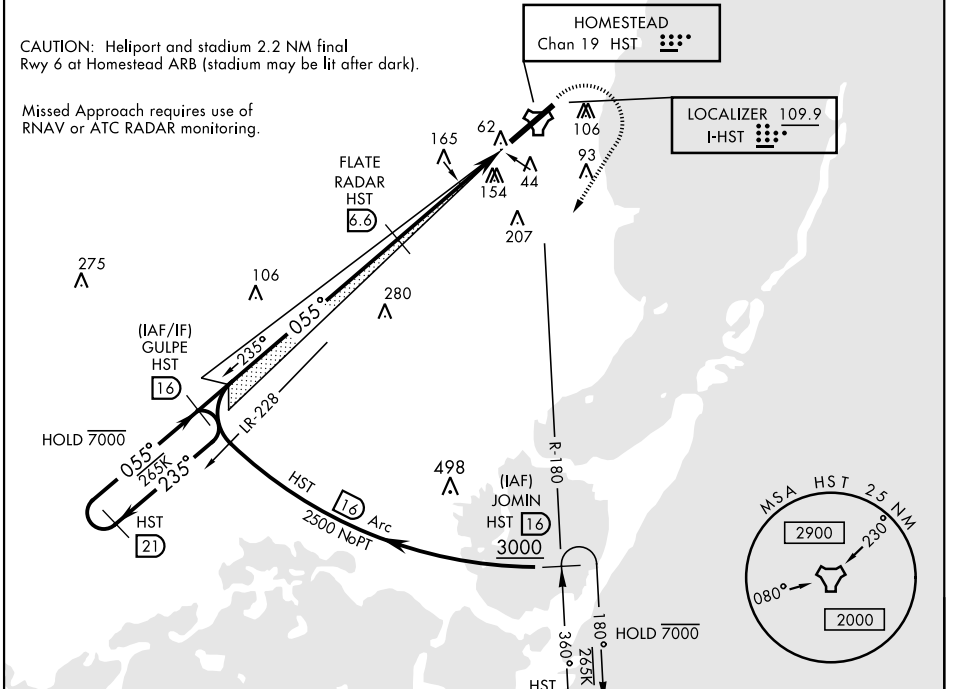
AL-494 [USAF]

HOMESTEAD ARB (KHST)

RADAR or DME required.	ALSIF-1 	MISSED APPROACH: Climb to 800 then climbing right turn to 3000 intercept HST TACAN R-180 to JOMIN and hold.
<p>▼ * When ALS inop, increase RVR to 40, vis to ¾ mile. ** When ALS inop, increase CAT AB RVR to 55, vis to 1 mile; CAT CDE RVR to 60, vis to 1 ½ miles.</p>		

ATIS ★ 132.275 269.9	APP CON 123.8 257.675	TOWER 133.45 279.55	GND CON 121.75 275.8	CLNC DEL 121.75 275.8
--------------------------------	---------------------------------	-------------------------------	--------------------------------	---------------------------------

*** Circling NA NW of Rwy 6-24.



ELEV 6	TDZE 5
055° 5.4 NM from FAF	
HIRL Rwy 6-24	
FAF to MAP 5 NM	
Knots	60 90 120 150 180
Min:Sec	5:00 3:20 2:30 2:00 1:40

CATEGORY	A	B	C	D	E
S-ILS 6 *	205/24		200	(200-½)	
S-LOC 6 **	460/24	455 (500-½)	460/45	455 (500-¾)	
*** CIRCLING	460-1 454 (500-1)	500-1 494 (500-1)	520-1½ 514 (600-1½)	580-2 574 (600-2)	780-2¾ 774 (800-2¾)

HOMESTEAD, FLORIDA

25°29'N-80°23'W

HOMESTEAD ARB (KHST)

Amtd 1 30DEC21

ILS or LOC Z RWY 6

SE-3, 20 FEB 2025 to 20 MAR 2025

SE-3, 20 FEB 2025 to 20 MAR 2025