

(LIFRR2.LIFRR) 24109

AL-494 (FAA)

LIFRR TWO DEPARTURE (RNAV)

HOMESTEAD ARB (KHST)

HOMESTEAD, FLORIDA

**TOP ALTITUDE:
ASSIGNED BY ATC**

RNAV 1 - DME/DME/IRU or GPS.

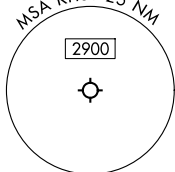
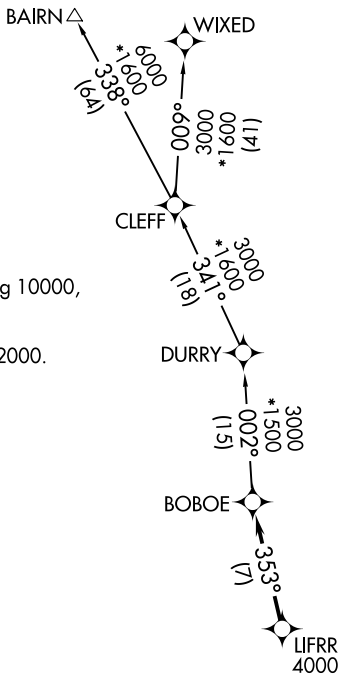
RADAR required for non-GPS
equipped aircraft.

NOTE: Accelerate to 250K until leaving 10000,
if unable, advise ATC.

NOTE: Jet aircraft only.

NOTE: For aircraft filed at or below 12000.

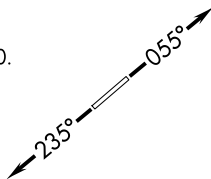
| | |
|-----------------|-------------|
| MIAMI DEP CON | 125.5 354.1 |
| ATIS* | |
| 132.275 | 269.9 |
| CLNC DEL | |
| 121.75 | 275.8 |
| GND CON | |
| 121.75 | 275.8 |
| HOMESTEAD TOWER | |
| 133.45 | 279.55 |



TAKEOFF MINIMUMS

Rwy 6: Standard with minimum climb of 500'/NM to 1800.

Rwy 24: Standard with minimum climb of 500'/NM to 2200.



NOTE: Chart not to scale.



DEPARTURE ROUTE DESCRIPTION

TAKEOFF RUNWAY 6: Climb on heading 055° or as assigned by ATC, thence. . .

TAKEOFF RUNWAY 24: Climb on heading 235° or as assigned by ATC, thence. . .

. . . for RADAR vector to cross LIFRR at or above 4000, then on track 353° to BOBOE, then on assigned transition, maintain ATC assigned altitude, expect clearance to filed altitude within 10 minutes after departure.

BAIERN TRANSITION (LIFRR2.BAIERN)

WIXED TRANSITION (LIFRR2.WIXED)

LIFRR TWO DEPARTURE (RNAV)

(LIFRR2.LIFRR) 21MAR24

HOMESTEAD, FLORIDA
HOMESTEAD ARB (KHST)

SE-3, 20 FEB 2025 to 20 MAR 2025

SE-3, 20 FEB 2025 to 20 MAR 2025