

# HI-TACAN Z RWY 5R

VORTAC EDW <b>116.4</b> Chan <b>111</b>	APCH CRS <b>046°</b>	Rwy Idg <b>15,024</b> TDZE <b>2303</b> Arprt Elev <b>2311</b>
---	-------------------------	---

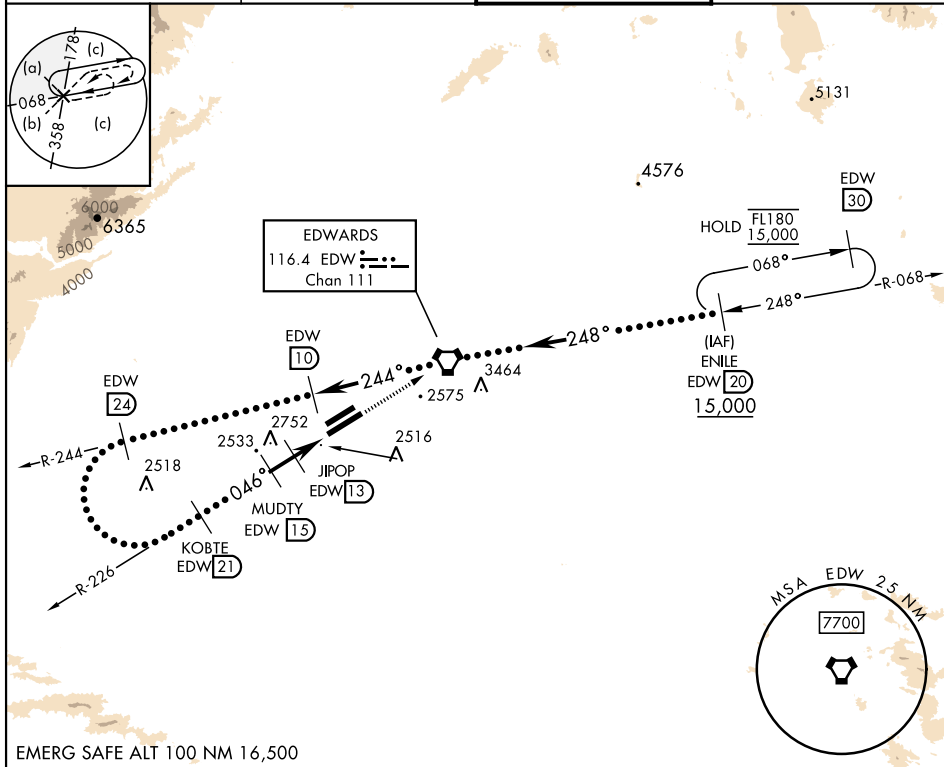
[USAF]

EDWARDS AFB (KEDW)

▼ \* Circling not authorized NW of Rwy 5L-23R.  
 Circling not authorized at night to Rwy 5L-23R.

MISSED APPROACH: Track EDW VORTAC R-226 to EDW.  
 Intercept EDW R-068 to ENILE and hold. Maintain 15,000.  
 Missed approach requires use of RNAV or ATC RADAR monitoring.

ATIS ★ <b>127.425 269.9</b>	JOSHUA APP/DEP CON <b>133.65 348.7</b>	TOWER ★ <b>120.7 (CTAF) 318.1 (CTAF)</b>	GND CON <b>121.8 225.4</b>
--------------------------------	---	---	-------------------------------

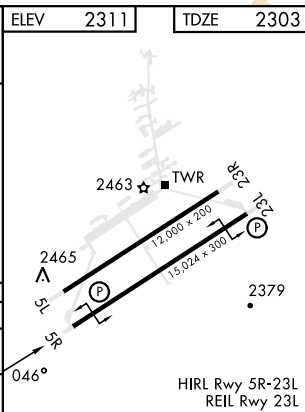


SW-3, 20 FEB 2025 to 20 MAR 2025

SW-3, 20 FEB 2025 to 20 MAR 2025

EMERG SAFE ALT 100 NM 16,500

Remain within 28 NM	R-244 EDW 24	R-244 EDW 10	15,000 EDW R-226	ELEV 2311	TDZE 2303
	5700	15,000	EDW 10		
	KOBTE R-226 EDW 21	MUDTY EDW 15	JPOPOP EDW 13		
	5300	3900	EDW 11.5		
	2.92° TCH 47	3200	EDW 10		
		2 NM	3 NM		
CATEGORY	C	D	E		
S-5R	2820-1½	517	(600-1½)		
CIRCLING*	2880-1½ 569 (600-1½)	2880-2	569 (600-2)		



# HI-TACAN Z RWY 5R