

RNAV (GPS) RWY 5R

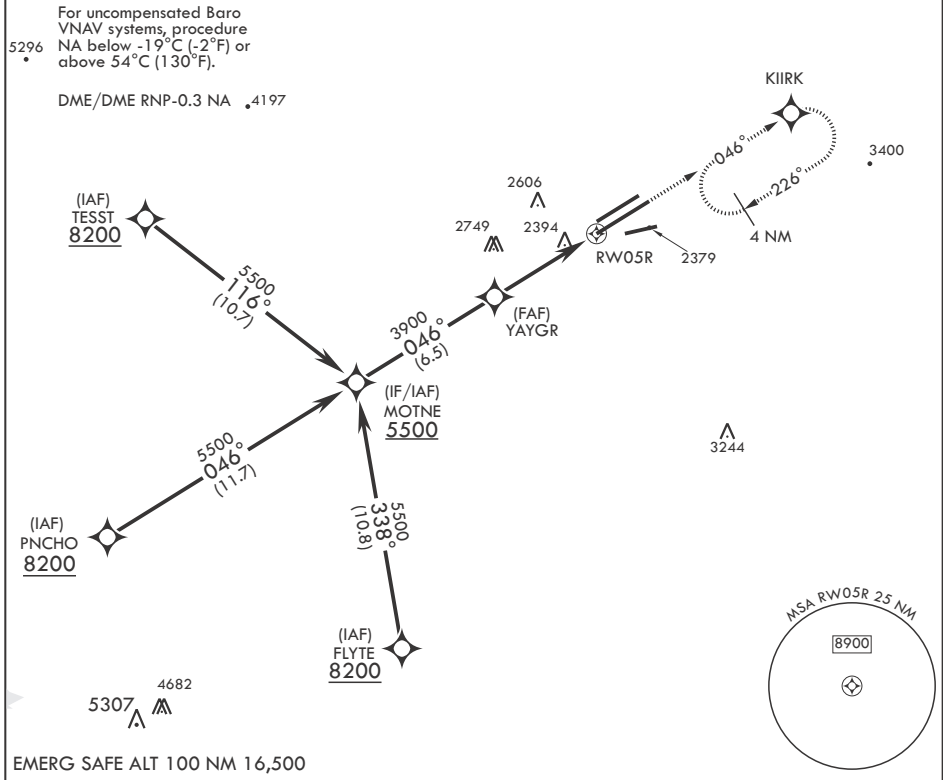
APCH CRS **046°**
 Rwy Idg **15,024**
 TDZE **2303**
 Arprt Elev **2311**

(-USAF)

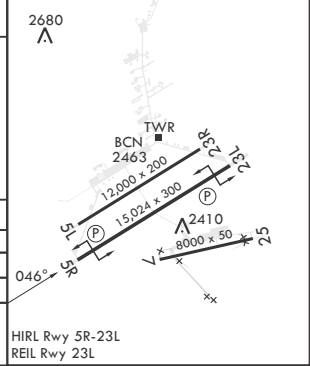
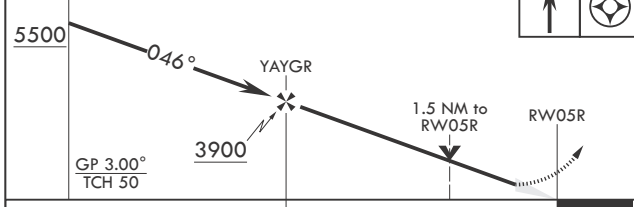
EDWARDS AFB (KEDW)

▽ * Circling not authorized NW of Rwy 5L-23R.
MISSED APPROACH: Climb to 5700 direct KIIRK and hold, continue climb-in-hold to 5700.

ATIS* 127.425 269.9	JOSHUA APP CON/DEP CON 133.65 348.7	TOWER* 120.7 (CTAF) 318.1 (CTAF)	GND CON 121.8 225.4
-------------------------------	---	--	-------------------------------



MOTNE VGSI and descent angles not coincident. 5700 KIIRK ELEV 2311 TDZE 2303



CATEGORY	A	B	C	D	E
LNAV/VNAV DA	2820-1 ³ / ₈		517	(600-1 ³ / ₈)	
LNAV MDA	2820-1	517 (600-1)	2820-1 ³ / ₈	517 (600-1 ³ / ₈)	
C CIRCLING*	2880-1	569 (600-1)	2880-1 ¹ / ₂ 569 (600-1 ¹ / ₂)	2880-2	569 (600-2)

EDWARDS, CALIFORNIA 34°54'N - 117°53'W EDWARDS AFB (KEDW)

Amdt 1 30JAN20

RNAV (GPS) RWY 5R

SW-3, 20 FEB 2025 to 20 MAR 2025

SW-3, 20 FEB 2025 to 20 MAR 2025