

EDWARDS, CALIFORNIA

VOR/DME or TACAN Y RWY 23L

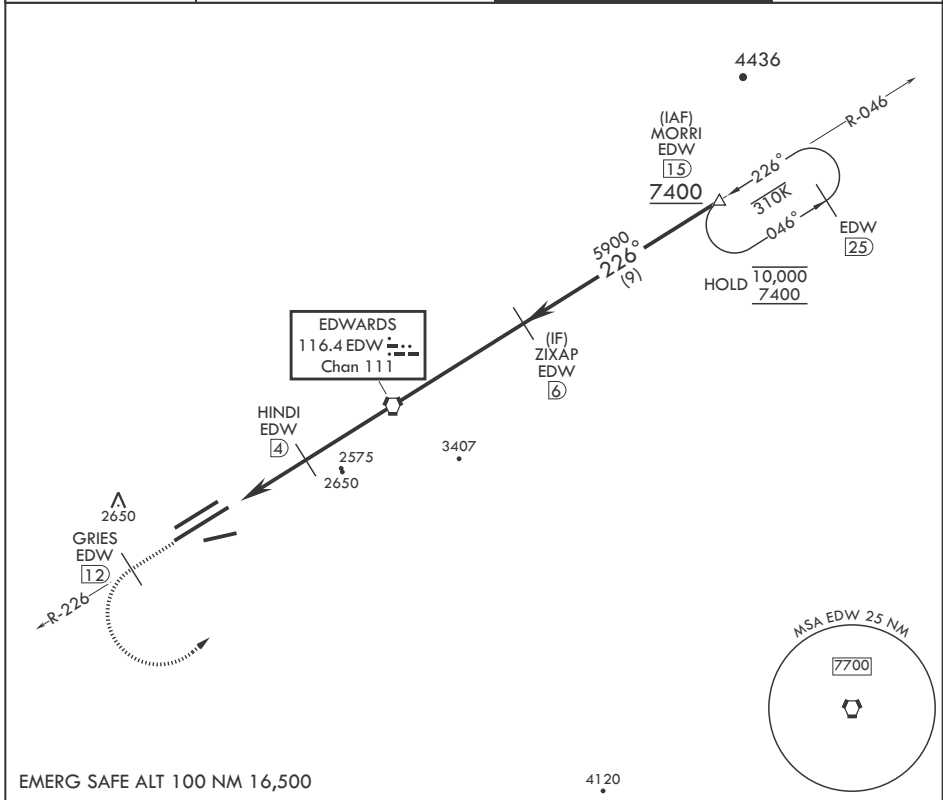
VORTAC EDW 116.4 Chan 111	APCH CRS 226°	Rwy ldg TDZE 15,024 2286 Arprt Elev 2311
---------------------------------	------------------	--

-(USAF)

EDWARDS AFB (KEDW)

⚠ * Circling not authorized NW of Rwy 5L-23R. Circling not authorized at night to Rwy 5L-23R. **MISSED APPROACH:** Climb to 7400. Track EDW VORTAC R-226 outbound to GRIES, then turn left direct MORRI and hold. Missed Approach requires use of RNAV or ATC RADAR monitoring.

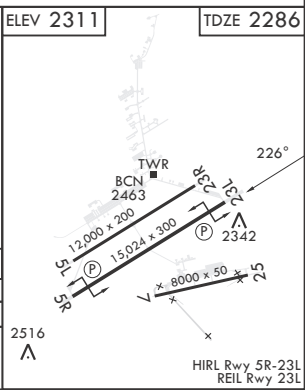
ATIS * 127.425 269.9	JOSHUA APP CON/DEP CON 133.65 348.7	TOWER * 120.7 (CTAF) 318.1 (CTAF)	GND CON 121.8 225.4
-------------------------	--	--------------------------------------	------------------------



SW-3, 20 FEB 2025 to 20 MAR 2025

SW-3, 20 FEB 2025 to 20 MAR 2025

7400 EDW R-226	GRIES EDW 12	MORRI EDW 15	ELEV 2311	TDZE 2286	
<p>VGS1 and descent angles not coincident (VGS1 Angle 3.00/TCH 49).</p>					
CATEGORY	A	B	C	D	E
S-23L	2640-1		354	(400-1)	
CIRCLING*	2880-1 569 (600-1)		2880-1½ 569 (600-1½)	2880-2 569 (600-2)	



EDWARDS, CALIFORNIA 34°54'N - 117°53'W EDWARDS AFB (KEDW)

Amdt 2 23APR20

VOR/DME or TACAN Y RWY 23L