

(GABOO.GABOO1) 25051

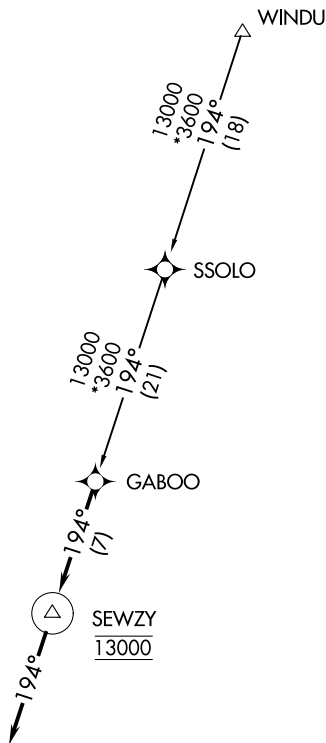
GABOO ONE ARRIVAL (RNAV)

AL-502 (FAA)

AUSTIN, TEXAS

AUSTIN APP CON
127.225 317.65
HY1 ATIS
120.825
T74 AWOS-3PT
119.75

- NOTE: RADAR required.
- NOTE: RNAV 1.
- NOTE: DME/DME/IRU or GPS required.
- NOTE: Turbojet and turboprop aircraft only.



LAGO VISTA TX/RUSTY ALLEN

LAKEWAY AIRPARK

SAN MARCOS RGNL

TAYLOR MUNI

NOTE: Chart not to scale.

ARRIVAL ROUTE DESCRIPTION

SSOLO TRANSITION (SSOLO.GABOO1)

WINDU TRANSITION (WINDU.GABOO1)

LANDING ALL AIRPORTS: From GABOO on track 194° to cross SEWZY at 13000, then on track 194°. Expect RADAR vectors to final approach course.

GABOO ONE ARRIVAL (RNAV)

(GABOO.GABOO1) 16JUL20

AUSTIN, TEXAS

SC-3, 20 FEB 2025 to 20 MAR 2025

SC-3, 20 FEB 2025 to 20 MAR 2025