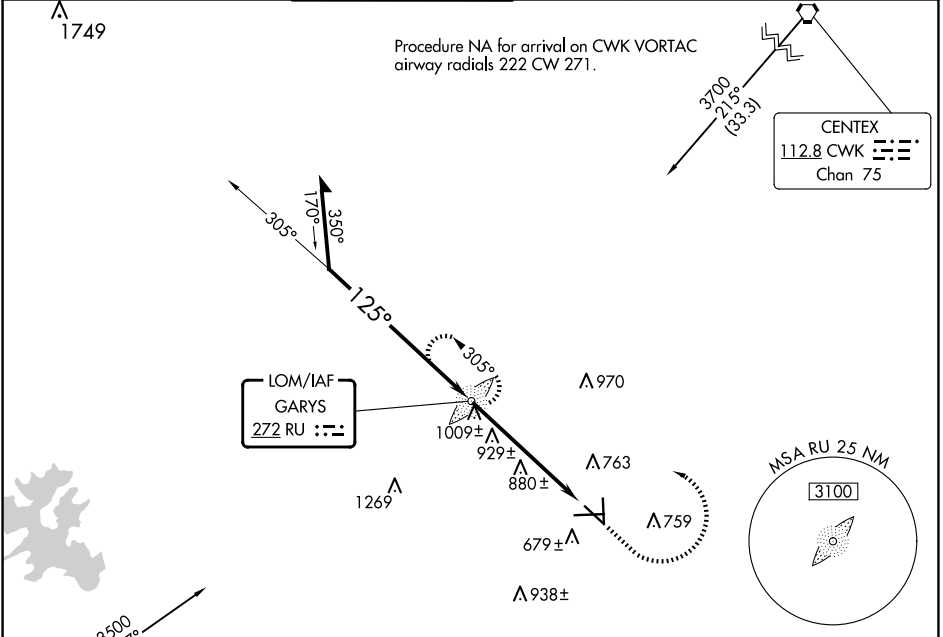


LOM RU	APP CRS	Rwy Idg TDZE	<b>5601</b>
<b>272</b>	<b>125°</b>	Apt Elev	<b>593</b>
			<b>595</b>

**NDB RWY 13**  
SAN MARCOS RGNL (HYI)

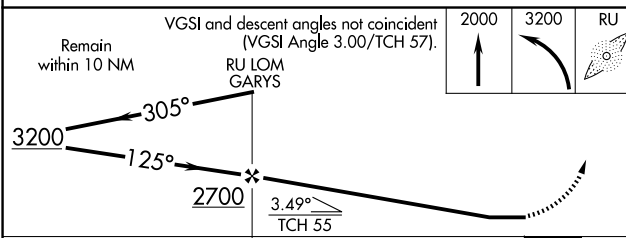
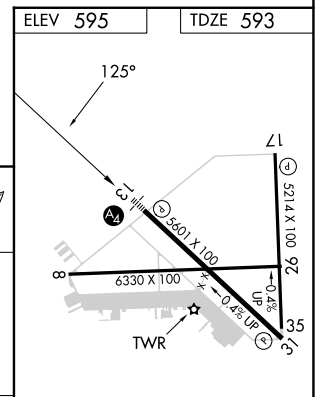
		MALS	MISSED APPROACH: Climb to 2000 then climbing left turn to 3200 direct GARYS LOM and hold.		
--	--	------	---	--	--

ATIS <b>120.825</b>	AUSTIN APP CON <b>119.0 370.85</b>	SAN MARCOS TOWER* <b>126.825</b> (CTAF)	GND CON <b>120.125</b>	CLNC DEL <b>120.125</b>	CLNC DEL <b>121.35</b> (when twr closed)
------------------------	---------------------------------------	--	---------------------------	----------------------------	--



Procedure NA for arrival on SAT VORTAC  
airway radials 002 CW 081.

SAN ANTONIO  
116.8 SAT   
Chan 115



CATEGORY	A	B	C	D
S-13	1240-3/4 647 (700-3/4)		1240-1 5/8 647 (700-1)	
CIRCLING	1240-1 645 (700-1)		1240-1 7/8 645 (700-1 1/8)	1320-2 1/4 725 (800-2 1/4)

MIRL Rwy's 8-26, 13-31, and 17-35					
FAF to MAP 5.5 NM					
Knots	60	90	120	150	180
Min:Sec	5:30	3:40	2:45	2:12	1:50

SC-3, 20 FEB 2025 to 20 MAR 2025

SC-3, 20 FEB 2025 to 20 MAR 2025