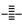


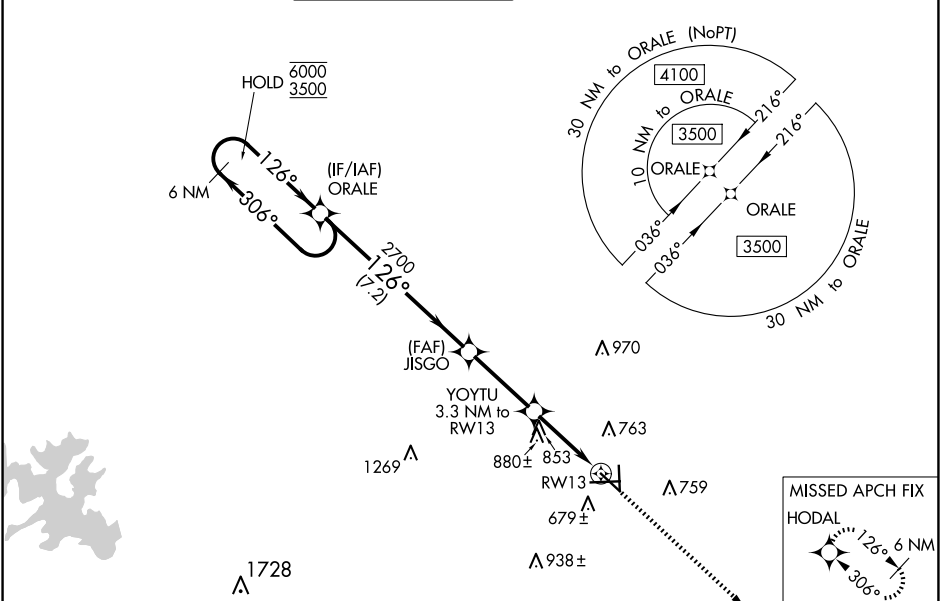
WAAS CH <b>86232</b> <b>W13A</b>	APP CRS <b>126°</b>	Rwy Idg <b>5601</b> TDZE <b>593</b> Apt Elev <b>595</b>
--	------------------------	---

# RNAV (GPS) RWY 13

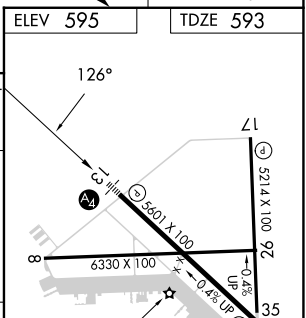
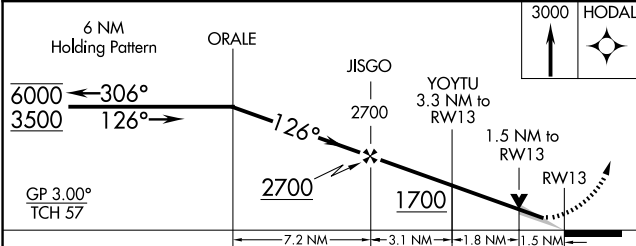
SAN MARCOS RGNL (HYI)

RNP APCH-GPS. ⚠ Circling NA for Cat E southwest of Rwy 13-31. Inop table does not apply to LPV all Cats. ⚠ For uncompensated Baro-VNAV systems, LNAV/VNAV NA below -1.6°C or above 54°C. For inop ALS, increase LNAV/VNAV Cat E visibility to 1 SM and LNAV Cat E visibility to 1½ SM.	MALS  2	MISSED APPROACH: Climb to 3000 direct HODAL and hold.
---	--	--

ATIS <b>120.825</b>	AUSTIN APP CON <b>119.0 370.85</b>	SAN MARCOS TOWER* <b>126.825</b> (CTAF) <b>0</b>	GND CON <b>120.125</b>	CLNC DEL <b>120.125</b>	CLNC DEL <b>121.35</b> (when twr closed)
------------------------	---------------------------------------	---	---------------------------	----------------------------	--



ELEV 595	TDZE 593
----------	----------



CATEGORY	A	B	C	D	E
LPV DA		793-¾	200 (200-¾)		
LNAV/VNAV DA		946-¾	353 (400-¾)		
LNAV MDA	1120-¾	527 (600-¾)	1120-1¼	527 (600-1¼)	
CIRCLING	1120-1	525 (600-1)	1240-1¾ 645 (700-1¾)	1320-2¼ 725 (800-2¼)	1340-2¾ 745 (800-2¾)

MIRL Rwy 8-26, 13-31, and 17-35 <b>0</b>
--