

APP CRS Rwy Idg **6300**  
 190° TDZE **6451**  
 Apt Elev **6451**

# RNAV (RNP) X RWY 19

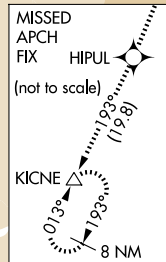
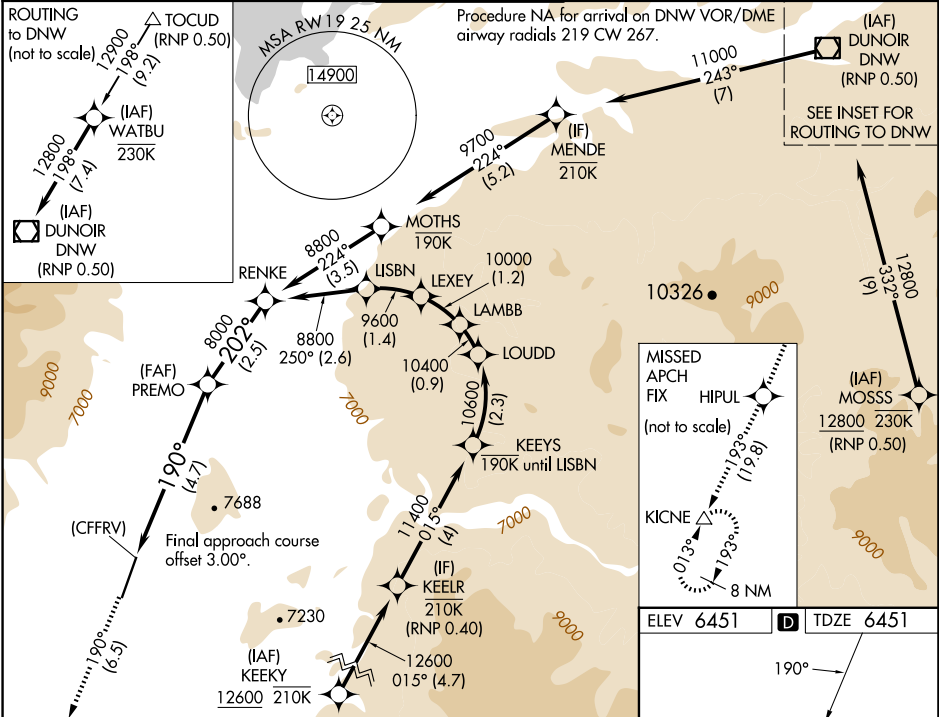
JACKSON HOLE (JAC)

RNP AR APCH-GPS.  
 For uncompensated Baro-VNAV systems, procedure NA below -27°C or above 54°C. For inop ALS, increase RNP 0.20# all Cats visibility to RVR 6000. For inop ALS, increase RNP 0.30 all Cats visibility to 1 1/4 SM.

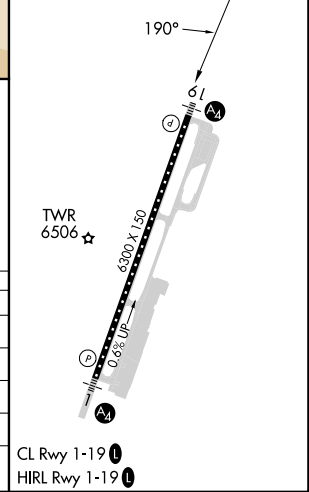
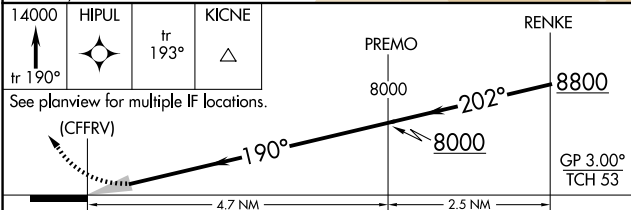
MALS

MISSED APPROACH: Climb to 14000 on track 190° to HIPUL and on track 193° to KICNE and hold, continue climb-in-hold to 14000. \*Missed approach requires minimum climb of 226 feet per NM to 11600. #Missed approach requires minimum climb of 215 feet per NM to 11600.

D-ATIS **120.625** SALT LAKE CENTER **133.25 285.6** JACKSON TOWER\* **118.075** (CTAF) GND CON **124.55** UNICOM **122.95**



ELEV 6451 TDZE 6451



| CATEGORY     | A | B          | C               | D |
|--------------|---|------------|-----------------|---|
| RNP 0.10 DA* |   | 6777/40    | 326 (400-3/4)   |   |
| RNP 0.20 DA# |   | 6856/50    | 405 (500-1)     |   |
| RNP 0.30 DA# |   | 6938/60    | 487 (500-1 1/4) |   |
| RNP 0.30 DA  |   | 7045-1 3/8 | 594 (600-1 1/8) |   |

## AUTHORIZATION REQUIRED

NW-1, 20 FEB 2025 to 20 MAR 2025

NW-1, 20 FEB 2025 to 20 MAR 2025