

VOR/DME JAC	APP CRS	Rwy Idg	6300
<b>115.4</b>	<b>193°</b>	TDZE	6451
Chan 101		Apt Elev	6451

# VOR RWY 19

## JACKSON HOLE (JAC)

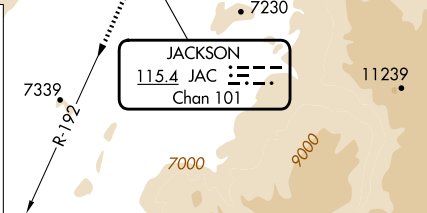
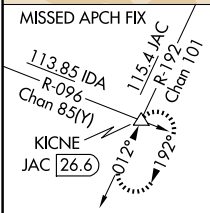
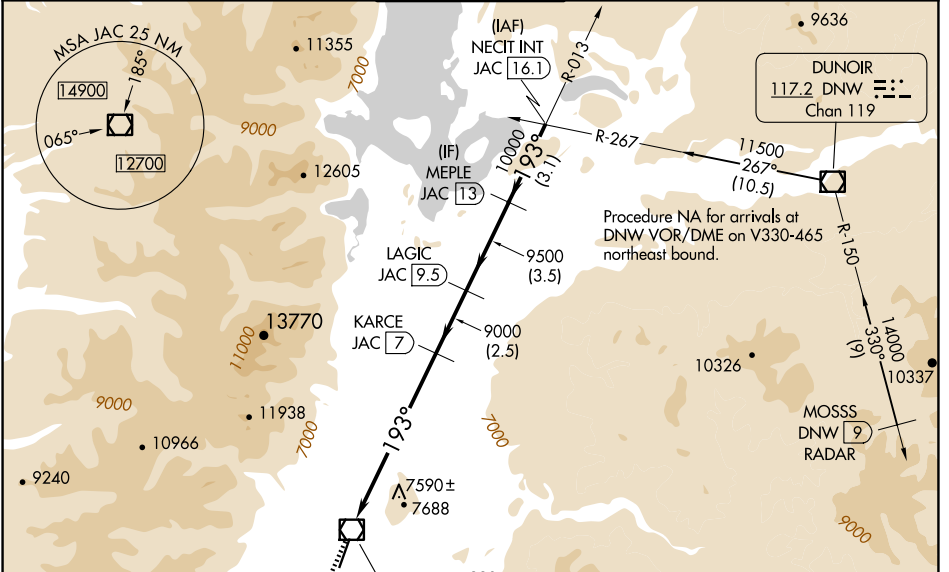
DME required. RADAR required for procedure entry at MOSSS.

**⚠** Circling NA east of Rwy 1-19. Rwy 19 helicopter visibility reduction below RVR 4000 NA. Circling NA for Cat D.

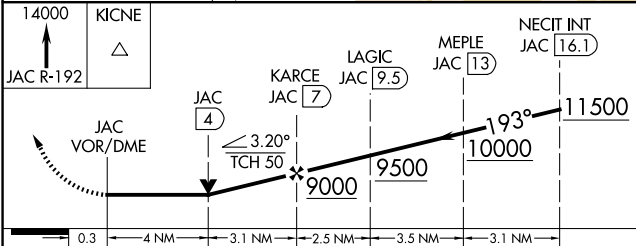
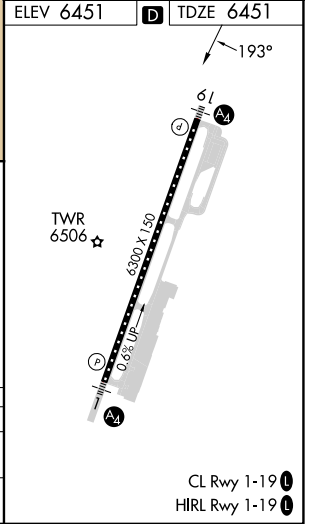
**❄** -22°C Inop table does not apply to S-19 Cat C/D.

**MALS** **⚠** MISSED APPROACH: Climb to 14000 on JAC VOR/DME R-192 to KICNE INT/26.6 DME and hold, continue climb-in-hold to 14000.

D-ATIS	SALT LAKE CENTER	JACKSON TOWER*	GND CON	UNICOM
<b>120.625</b>	<b>133.25 285.6</b>	<b>118.075 (CTAF)</b> <b>⚠</b>	<b>124.55</b>	<b>122.95</b>



ELEV 6451	TDZE 6451
-----------	-----------



CATEGORY	A	B	C	D
S-19	7900/55 1449 (1500-1)	7900-1¼ 1449 (1500-1¼)	7900-3 1449 (1500-3)	
<b>C</b> CIRCLING	7900-1¼ 1449 (1500-1¼)	7900-1½ 1449 (1500-1½)	7900-3 1449 (1500-3)	NA