

NDB HIN 275	APP CRS 194°	Rwy Idg 5500
		TDZE 3286
		Apt Elev 3298

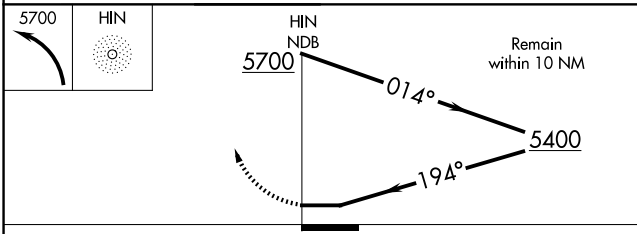
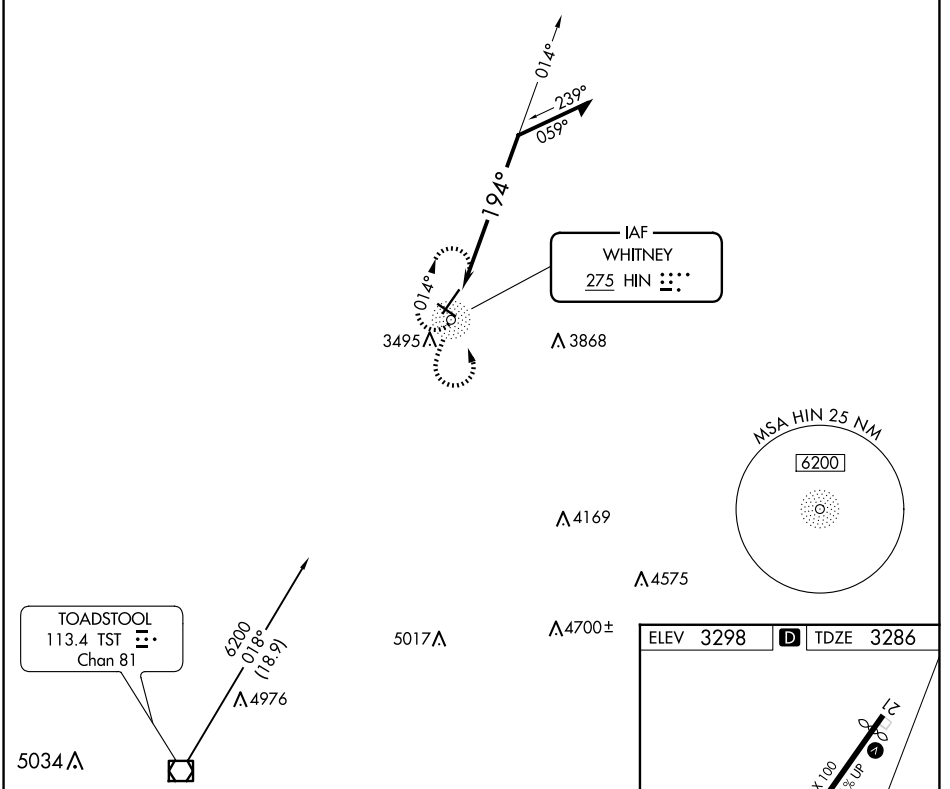
NDB RWY 21

CHADRON MUNI (CDR)

⚠ When local altimeter setting not received, use Pine Ridge altimeter setting and increase all MDA 80 feet, increase S-21 Cats C and D visibility ½ SM, and increase Circling Cat C visibility ¼ SM.

MISSED APPROACH: Climbing left turn to 5700 in HIN NDB holding pattern.

ASOS 118.05	DENVER CENTER 127.95 338.2	UNICOM 122.8 (CTAF) 1
-----------------------	--------------------------------------	---------------------------------



ELEV 3298	D TDZE 3286
-----------	--------------------

This section provides a detailed view of the approach path. It shows a 194° heading to the HIN NDB. Key altitudes and headings are:

- 5998 X 100** at 014°
- 4400 X 75** at 014°
- 3363** field elevation
- 5700** HIN NDB

 The diagram also includes a note "REIL Rwy 21 and 30" and "MIRL Rwy 12-30".

CATEGORY	A	B	C	D
S-21	4020-1 734 (800-1)	4020-1¼ 734 (800-1¼)	4020-2	734 (800-2)
CIRCLING	4020-1¼	722 (800-1¼)	4020-2 722 (800-2)	4220-3 922 (1000-3)

NC-2, 20 FEB 2025 to 20 MAR 2025

NC-2, 20 FEB 2025 to 20 MAR 2025