

VOR/DME VIH	APP CRS	Rwy Idg	5500
117.7	241°	TDZE	1117
Chan 124		Apt Elev	1148

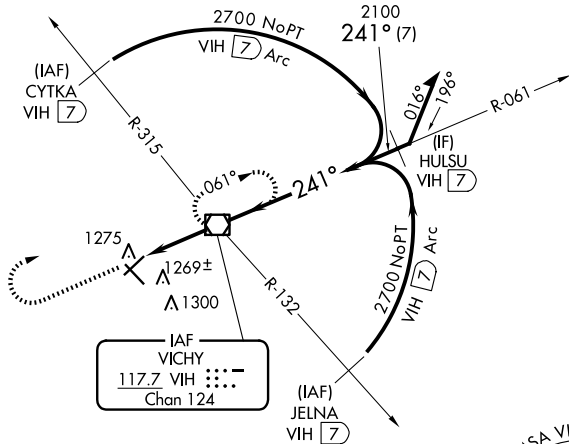
VOR RWY 22

ROLLA NTL (VIH)

⚠ When local altimeter setting not received, use Fort Leonard Wood altimeter setting; increase all MDA 80 feet and S-22 Cat D and Circling Cat D visibility ¼ SM. VDP NA with Fort Leonard Wood altimeter setting.

MISSED APPROACH: Climb to 2700 then right turn direct VIH VOR/DME and hold.

ASOS 119.025	KANSAS CITY CENTER 128.35 284.675	UNICOM 123.0 (CTAF) 0
------------------------	---	---------------------------------



NC-3, 20 FEB 2025 to 20 MAR 2025

NC-3, 20 FEB 2025 to 20 MAR 2025

ELEV 1148	TDZE 1117
-----------	-----------

MIRL Rwy 13-31 and 4-22 0

FAF to MAP 2.9 NM

Knots	60	90	120	150	180
Min:Sec	2:54	1:56	1:27	1:10	0:58

⊕ 1620

MSA VIH 25 NM

2700

VIH

VIH VOR/DME

Remain within 10 NM

061°

2700

241°

2100

3.07° TCH 52

1.1 NM

1.8 NM

CATEGORY	A	B	C	D
S-22	1520-1	403 (400-1)	1520-1¼	403 (400-1¼)
CIRCLING	1600-1	452 (500-1)	1600-1½	1740-2 592 (600-2)