

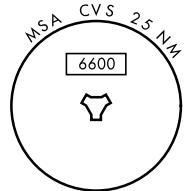
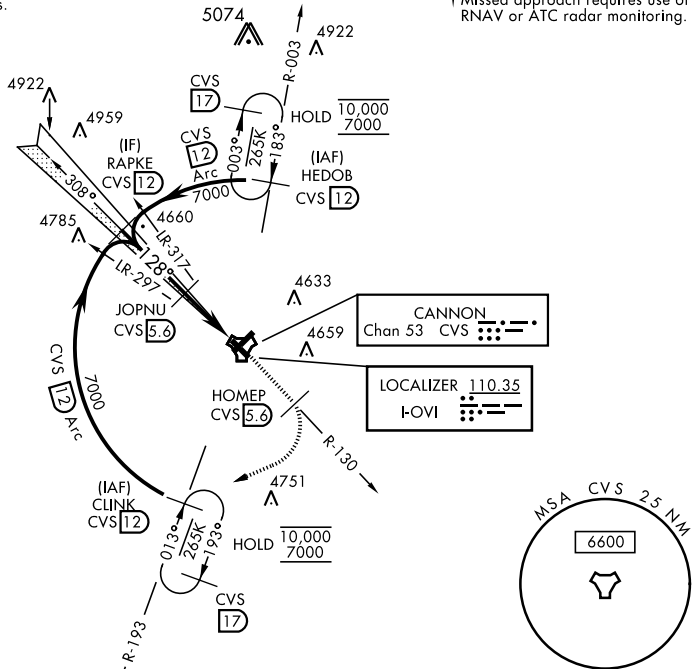
ILS or LOC RWY 13

LOC I-OVI 110.35	APCH CRS 128°	Rwy ldg 8196 TDZE 4294 Arprt Elev 4295	AL-512 [USAF]	CANNON AFB (KCVS)
ATC RADAR or DME required.			SSALR 	† MISSED APPROACH: Climb to 6000 out CVS TACAN R-130 5.6 DME (HOMEP) then climbing right turn to 7000 intercept CVS R-193 to 12 DME (CLINK) and hold.
* When ALS inop, increase vis to ¾ mile.				

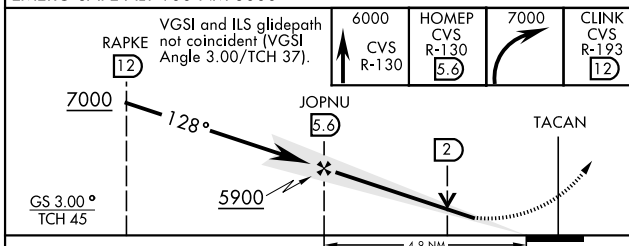
ATIS 119.1 269.9	CANNON APP CON 118.425 352.1	CANNON TOWER 120.4 270.25	GND CON 121.9 275.8	CLNC DEL 120.2 293.225
----------------------------	--	-------------------------------------	-------------------------------	----------------------------------

** When ALS inop, increase CAT AB vis to 1 mile; CAT CDE vis to 1 3/8 miles.

† Missed approach requires use of RNAV or ATC radar monitoring.



EMERG SAFE ALT 100 NM 8000



ELEV 4295	TDZE 4294
128°	
4525	4433
4327	TWR 4437
10.033 x 130	8.124 x 130
0.3% DOWN	51
HIRL all rwys	
FAF to MAP 4.9 NM	
Knots	60 90 120 150 180
Min:Sec	4:54 3:16 2:27 1:58 1:38

CATEGORY	A	B	C	D	E
S-ILS 13 *	4544-1/2		250	(300-1/2)	
S-LOC 13**	4760-1/2	466 (500-1/2)	4760-1	466	(500-1)
CIRCLING	4840-1	4860-1 1/2	5000-2 1/4	5020-2 1/2	
	545 (600-1)	565(600-1 1/2)	705(800-2 1/4)	725(800-2 1/2)	

ILS or LOC RWY 13

SW-1, 20 FEB 2025 to 20 MAR 2025

SW-1, 20 FEB 2025 to 20 MAR 2025