

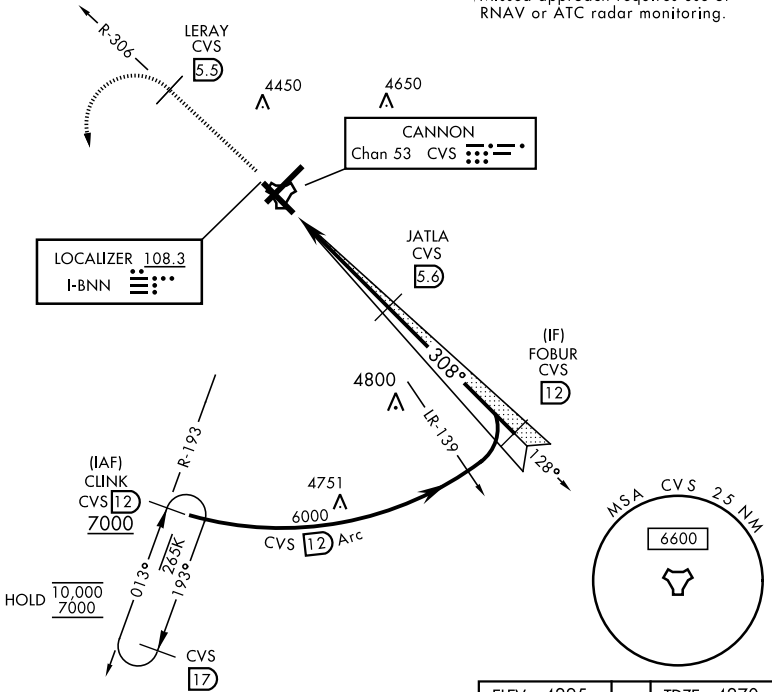
ILS or LOC RWY 31

LOC I-BNN 108.3	APCH CRS 308°	Rwy Ldg 8196 TDZE 4270 Arprt Elev 4295	AL-512 [USAF]	CANNON AFB (KCVS)
ATC RADAR or DME required. * When ALS inop, increase vis to $\frac{3}{4}$ mile.			SSALR 	† MISSED APPROACH: Climb to 6000 out CVS TACAN R-306 to 5.5 DME (LERAY) then turn left climbing to 7000 intercept CVS R-193 to 12 DME (CLINK) and hold.

ATIS 119.1 269.9	CANNON APP CON 118.425 352.1	CANNON TOWER 120.4 270.25	GND CON 121.9 275.8	CLNC DEL 120.2 293.225
-----------------------------------	---	--	--------------------------------------	---

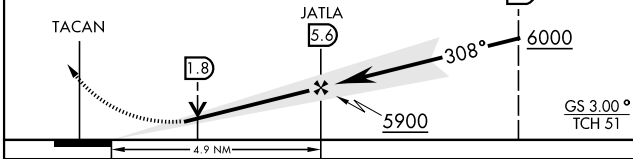
** When ALS inop, increase CAT AB vis to 1 mile, CAT CDE vis to $1\frac{1}{8}$ miles.

† Missed approach requires use of RNAV or ATC radar monitoring.



EMERG SAFE ALT 100 NM 9000

6000	LERAY CVS R-306 (5.5)	7000	CLINK CVS R-193 (12)	VGSI TCH (41') and the procedure TCH (51') is greater than 3'.



CATEGORY	A	B	C	D	E
S-ILS 31*	4470- $\frac{1}{2}$		200	(200- $\frac{1}{2}$)	
S-LOC 31**	4660- $\frac{1}{2}$ 390 (400- $\frac{1}{2}$)		4660- $\frac{5}{8}$ 390 (400- $\frac{5}{8}$)		
CIRCLING	4840-1 (600-1)		4860-1 $\frac{1}{2}$	5000-2 $\frac{1}{4}$	5020-2 $\frac{1}{2}$
	545 (600-1)		565 (600-1 $\frac{1}{2}$)	705 (800-2 $\frac{1}{4}$)	725 (800-2 $\frac{1}{2}$)

ELEV 4295	TDZE 4270
------------------	------------------

HIRL all rwys				
FAF to MAP 4.9 NM				
Knots	60	90	120	150 180
Min:Sec	4:54	3:16	2:27	1:58 1:38

ILS or LOC RWY 31

SW-1, 20 FEB 2025 to 20 MAR 2025

SW-1, 20 FEB 2025 to 20 MAR 2025