

ILS or LOC RWY 4

LOC I-GLO 108.5	APCH CRS 038°	Rwy Idg 10,003 TDZE 4284 Arprt Elev 4295	AL-512 [USAF]	CANNON AFB (KCVS)
---------------------------	-------------------------	---	---------------	-------------------

ATC RADAR or DME required.

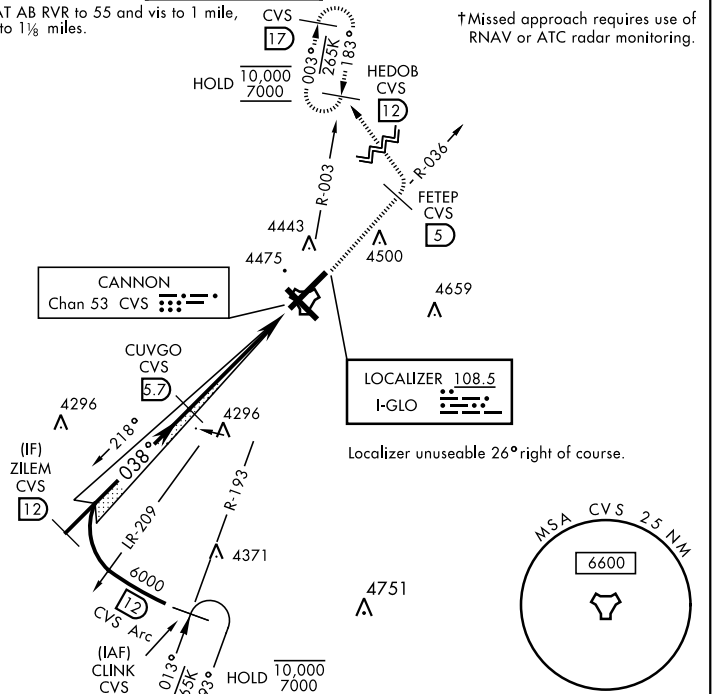
ALSF-1 **A1**

† MISSED APPROACH: Climb to 6000 out CVS TACAN R-036 to 5 DME (FETEP) turning left climb to 7000 intcp CVS R-003 to 12 DME (HEDOB) and hold.

ATIS 119.1 269.9	CANNON APP CON 118.425 352.1	CANNON TOWER 120.4 270.25	GND CON 121.9 275.8	CLNC DEL 120.2 293.225
----------------------------	--	-------------------------------------	-------------------------------	----------------------------------

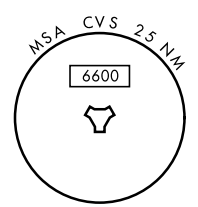
**When ALS inop, increase CAT AB RVR to 55 and vis to 1 mile, CAT CDE RVR to 60 and vis to 1½ miles.

† Missed approach requires use of RNAV or ATC radar monitoring.

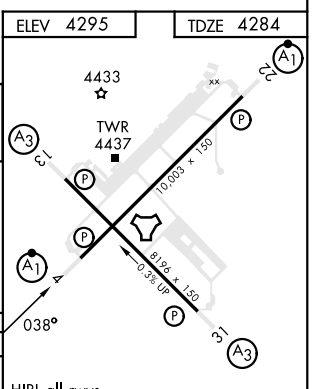
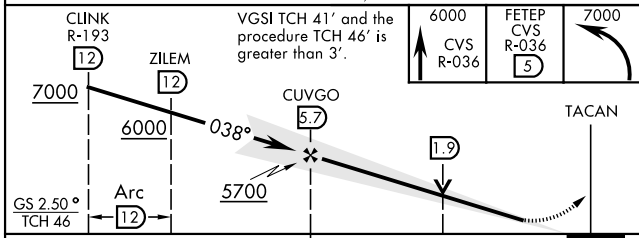


LOCALIZER **108.5**
I-GLO

Localizer unusable 26° right of course.



EMERG SAFE ALT 100 NM 9000



CATEGORY	A	B	C	D	E
S-ILS 4 *	4484/24		200	(200-½)	
S-LOC 4 **	4680/24	396 (400-½)	4680/35	396 (400-¾)	
CIRCLING	4840-1	545 (600-1)	4860-1½	5000-2¼	5020-2½
			565 (600-1½)	705 (800-2¼)	725 (800-2½)

HIRL all rwy's					
FAF to MAP 5.2 NM					
Knots	60	90	120	150	180
Min:Sec	5:12	3:28	2:36	2:05	1:44

ILS or LOC RWY 4

SW-1, 20 FEB 2025 to 20 MAR 2025

SW-1, 20 FEB 2025 to 20 MAR 2025