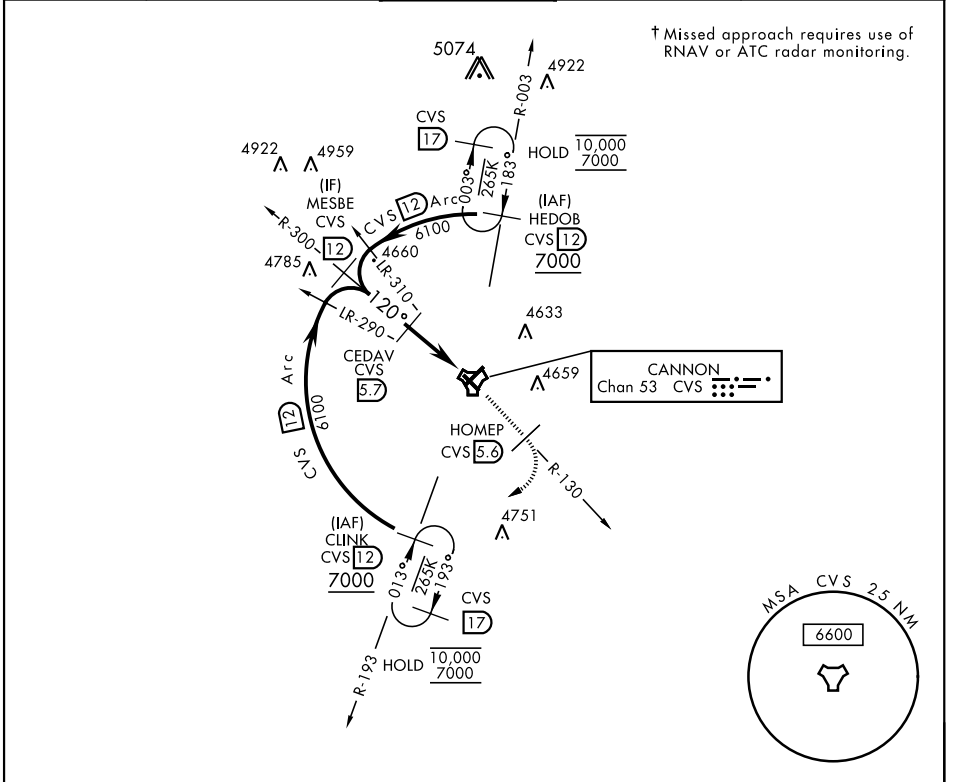


CLOVIS, NEW MEXICO

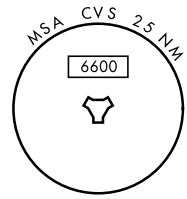
TACAN RWY 13

TACAN CVS Chan 53	APCH CRS 120°	Rwy Idg 8196 TDZE 4294 Arprt Elev 4295	AL-512 [USAF]	CANNON AFB (KCVS)
<p>▼ * When ALS inop, increase CAT AB vis to 1 mile, CAT CDE vis to 1½ miles.</p>			<p>SSALR (A3)</p>	<p>† MISSED APPROACH: Climb to 6000 out CVS TACAN R-130 to 5.6 DME (HOMEP) then turn right climbing to 7000 intercept CVS R-193 to 12 DME (CLINK) and hold.</p>

ATIS 119.1 269.9	CANNON APP CON 118.425 352.1	CANNON TOWER 120.4 270.25	GND CON 121.9 275.8	CLNC DEL 120.2 293.225
----------------------------	--	-------------------------------------	-------------------------------	----------------------------------



† Missed approach requires use of RNAV or ATC radar monitoring.



EMERG SAFE ALT 100 NM 9000

		ELEV 4295	TDZE 4294																			
<p>MESBE R-300 12 6100</p>	<p>CEDAV 5.7</p>	<p>6000 CVS R-130 5.6</p>	<p>7000 HOMEP CVS R-130 5.6</p>	<p>CLINK CVS R-193 12</p>																		
<p>TACAN HASRU 7</p>																						
<p>3.13° TCH 37</p>	<p>5 NM 0.1</p>																					
<table border="1" style="width:100%; border-collapse: collapse;"> <thead> <tr> <th>CATEGORY</th> <th>A</th> <th>B</th> <th>C</th> <th>D</th> <th>E</th> </tr> </thead> <tbody> <tr> <td>S-13*</td> <td>4800-¾</td> <td>506 (600-¾)</td> <td>4800-1</td> <td>506</td> <td>(600-1)</td> </tr> <tr> <td>CIRCLING</td> <td>4840-1</td> <td>545 (600-1)</td> <td>4860-1½ 565 (600-1½)</td> <td>5000-2¼ 705 (800-2¼)</td> <td>5020-2½ 725 (800-2½)</td> </tr> </tbody> </table>	CATEGORY	A	B	C	D	E	S-13*	4800-¾	506 (600-¾)	4800-1	506	(600-1)	CIRCLING	4840-1	545 (600-1)	4860-1½ 565 (600-1½)	5000-2¼ 705 (800-2¼)	5020-2½ 725 (800-2½)				
CATEGORY	A	B	C	D	E																	
S-13*	4800-¾	506 (600-¾)	4800-1	506	(600-1)																	
CIRCLING	4840-1	545 (600-1)	4860-1½ 565 (600-1½)	5000-2¼ 705 (800-2¼)	5020-2½ 725 (800-2½)																	
<p>HIRL all rwys</p>																						

CLOVIS, NEW MEXICO 34° 23' N - 103° 19' W CANNON AFB (KCVS)

Amdt 2 09NOV17

TACAN RWY 13

SW-1, 20 FEB 2025 to 20 MAR 2025

SW-1, 20 FEB 2025 to 20 MAR 2025