

CLOVIS, NEW MEXICO

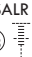
TACAN RWY 31

TACAN CVS Chan 53	APCH CRS 316°	Rwy ldg TDZE Arprt Elev	8196 4270 4295
----------------------	------------------	----------------------------	----------------------

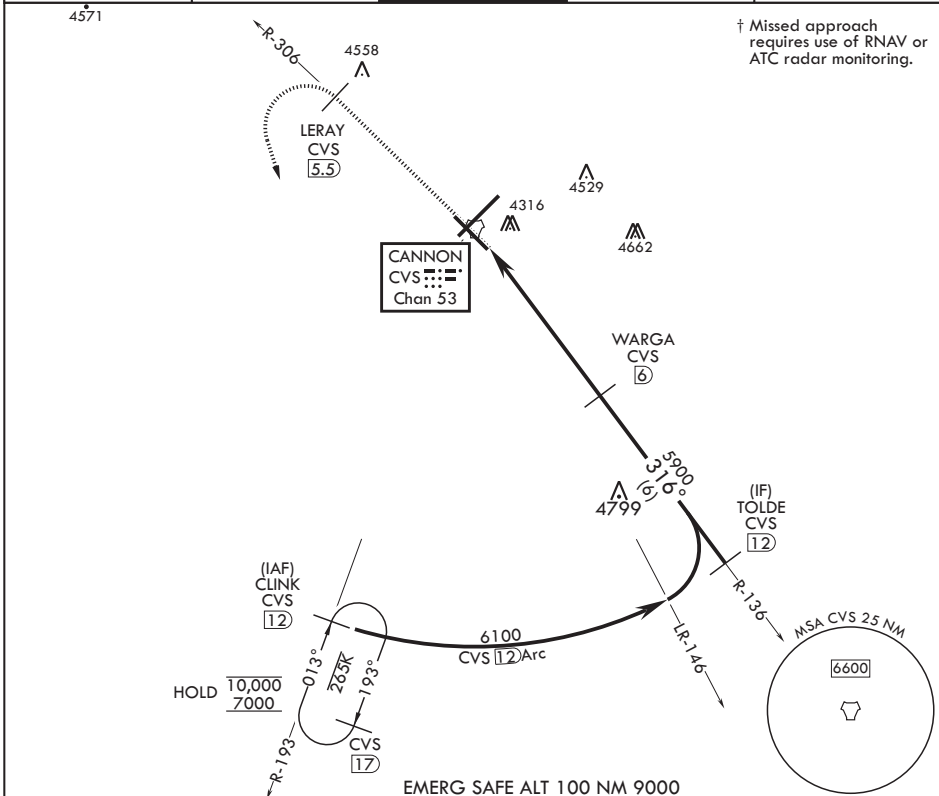
AL-512 (USAF)

CANNON AFB (KCVS)

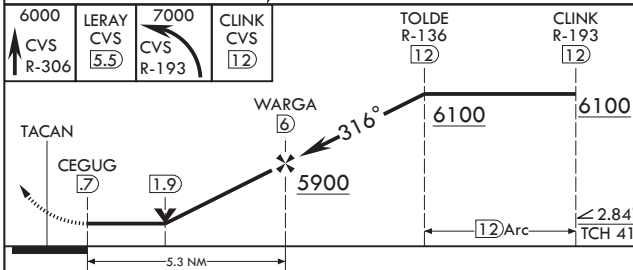
▼ * When ALS inop, increase CAT AB vis to 1 mile, CAT CDE increase vis to 1 3/8 miles.

SSALR  † MISSED APPROACH: Climb to 6000 out CVS TACAN R-306 to 5.5 DME (LERAY) then turn left climbing to 7000 intercept CVS TACAN R-193 to 12 DME (CLINK) and hold.

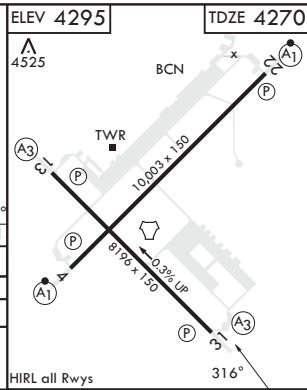
ATIS 119.1 269.9	CANNON APP CON 118.425 352.1	TOWER 120.4 270.25	GND CON 121.9 275.8	CLNC DEL 120.2 293.225
---------------------	---------------------------------	-----------------------	------------------------	---------------------------



† Missed approach requires use of RNAV or ATC radar monitoring.



	A		B		C		D		E	
S-31*	4700-1/2	430	(500-1/2)		4700-3/4	430	(500-3/4)			
CIRCLING	4840-1	545	(600-1)		4860-1 1/2	565	(600-1 1/2)	5000-2 1/4	705	(800-2 1/4)
								5020-2 1/2	725	(800-2 1/2)



EMERG SAFE ALT 100 NM 9000

SW-1, 20 FEB 2025 to 20 MAR 2025

SW-1, 20 FEB 2025 to 20 MAR 2025

CLOVIS, NEW MEXICO

34°23'N - 103°19'W

CANNON AFB (KCVS)

Amdt 3 10OCT19

TACAN RWY 31