

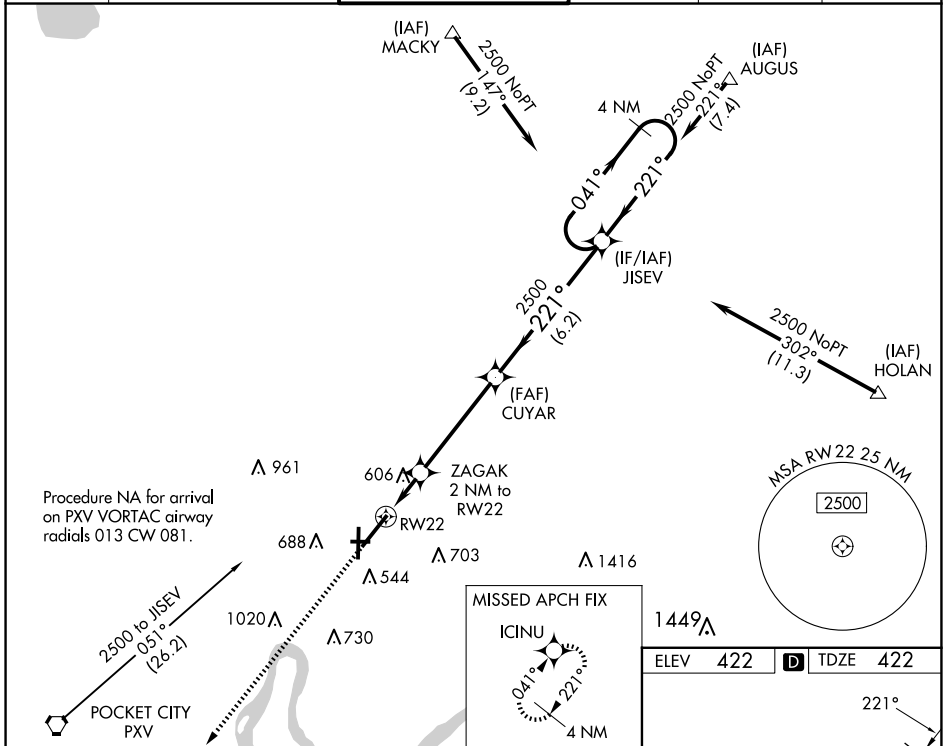
WAAS CH 42512 W22A	APP CRS 221°	Rwy Idg TDZE 422 Apt Elev 422	8021
--	------------------------	---	-------------

RNAV (GPS) RWY 22

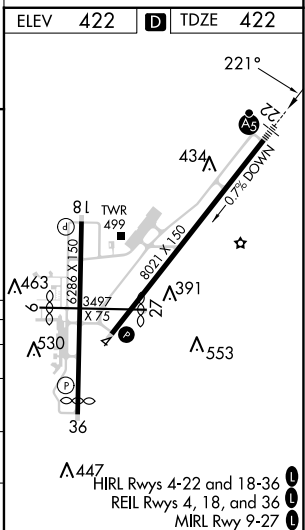
EVANSVILLE RGNL (EVV)

	For uncompensated Baro-VNAV systems, LNAV/VNAV NA below -15°C (5°F) or above 54°C (130°F). DME/DME RNP-0.3 NA. Circling Rwy 9 NA at night. ** RVR 1800 authorized with the use of FD or AP or HUD to DA.		MISSED APPROACH: Climb to 2500 direct ICINU and hold.

ATIS 120.2	EVANSVILLE APP CON ★ 124.025 290.9	EVANSVILLE TOWER ★ 118.7 (CTAF) 257.8	GND CON 121.9	CLNC DEL 126.6	UNICOM 122.95
----------------------	--	---	-------------------------	--------------------------	-------------------------



2500 *LNAV only RW22 1.2 NM 0.8 4.4 NM 6.2 NM	ZAGAK 2 NM to RW22 *1.2 NM to RW22 *1100	CUYAR 2500 221°	JISEV 2500 041° → ← 221°	4 NM Holding Pattern 2500 GP 3.00° TCH 50
CATEGORY LPV DA LNAV/VNAV DA LNAV MDA CIRCLING	A 860/24 920-1 498 (500-1)	B 438 (500-1/2) **622/24 840/45 1040-1 618 (700-1)	C 200 (200-1/2) 418 (500-3/4) 1040-1 3/4 618 (700-1 3/4)	D 438 (500-3/4) 1040-2 618 (700-2)



EC-2, 20 FEB 2025 to 20 MAR 2025

EC-2, 20 FEB 2025 to 20 MAR 2025