

# RNAV (GPS) RWY 4

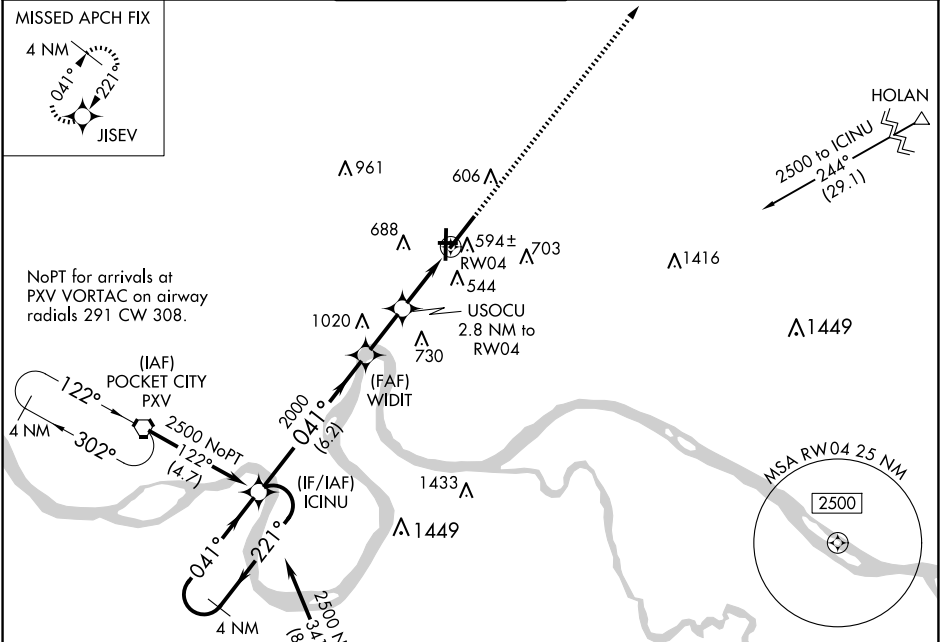
EVANSVILLE RGNL (E V V)

WAAS CH <b>82711</b> <b>W04A</b>	APP CRS <b>041°</b>	Rwy ldg TDZE Apt Elev	<b>8021</b> <b>389</b> <b>422</b>
--	------------------------	-----------------------------	---

**ASR** For uncompensated Baro-VNAV systems, LNAV/VNAV NA below -15°C (5°F) or above 54°C (130°F). DME/DME RNP-0.3 NA. Circling Rwy 9 NA at night.

**MISSED APPROACH:** Climb to 2500 direct JISEV and hold.

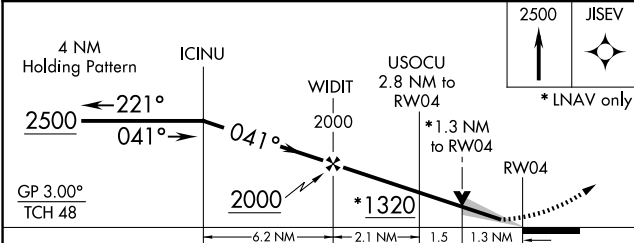
<b>ATIS</b> <b>120.2</b>	<b>EVANSVILLE APP CON *</b> <b>124.025 290.9</b>	<b>EVANSVILLE TOWER *</b> <b>118.7(CTAF) 257.8</b>	<b>GND CON</b> <b>121.9</b>	<b>CLNC DEL</b> <b>126.6</b>	<b>UNICOM</b> <b>122.95</b>
-----------------------------	---	---	--------------------------------	---------------------------------	--------------------------------



EC-2, 20 FEB 2025 to 20 MAR 2025

EC-2, 20 FEB 2025 to 20 MAR 2025

ELEV 422	<b>D</b>	TDZE 389
----------	----------	----------



CATEGORY	A	B	C	D
LPV DA	589-3/4		200 (200-3/4)	
LNAV/VNAV DA	852-1 1/2		463 (500-1 1/2)	
LNAV MDA	860-1	471 (500-1)	860-1 3/8	471 (500-1 1/2)
<b>C</b> CIRCLING	920-1 498 (500-1)	1040-1 618 (700-1)	1040-1 3/4 618 (700-1 3/4)	1040-2 618 (700-2)

