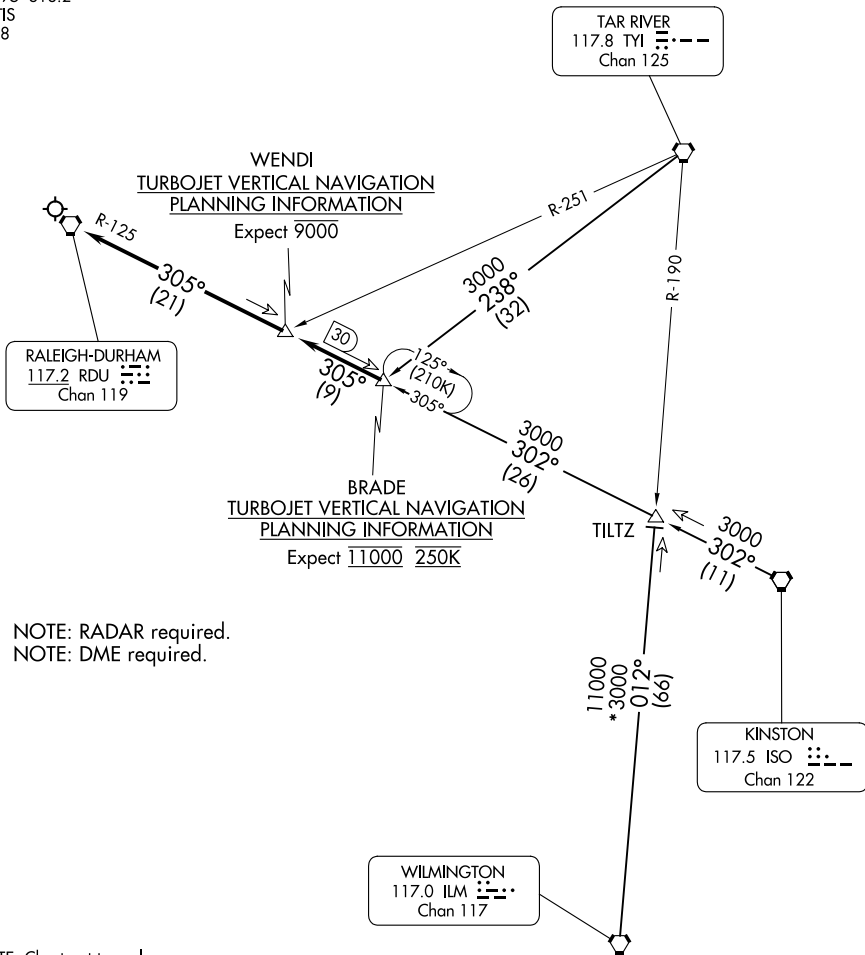


(BRADE.BRADE6) 24193  
**BRADE SIX ARRIVAL**

AL-516 (FAA)

RALEIGH-DURHAM INTL (RDU)  
 RALEIGH/DURHAM, NORTH CAROLINA

RALEIGH APP CON  
 124.95 318.2  
 D-ATIS  
 123.8



NOTE: RADAR required.  
 NOTE: DME required.

NOTE: Chart not to scale.

**ARRIVAL ROUTE DESCRIPTION**

KINSTON TRANSITION (ISO.BRADE6): From over ISO VORTAC on ISO R-302 to BRADE, thence . . . .

TAR RIVER TRANSITION (TYI.BRADE6): From over TYI VORTAC on TYI R-238 to BRADE, thence . . . .

WILMINGTON TRANSITION (ILM.BRADE6): From over ILM VORTAC on ILM R-012 to TILTZ, then on ISO R-302 to BRADE, thence . . . .

. . . . from over BRADE on RDU R-125 to RDU VORTAC. Expect RADAR vectors to final approach course after WENDI.

**BRADE SIX ARRIVAL**  
 (BRADE.BRADE6) 24MAY18

RALEIGH/DURHAM, NORTH CAROLINA  
 RALEIGH-DURHAM INTL (RDU)

SE-2, 20 FEB 2025 to 20 MAR 2025

SE-2, 20 FEB 2025 to 20 MAR 2025