

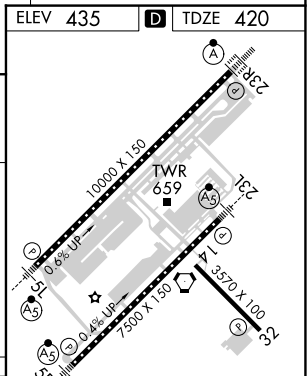
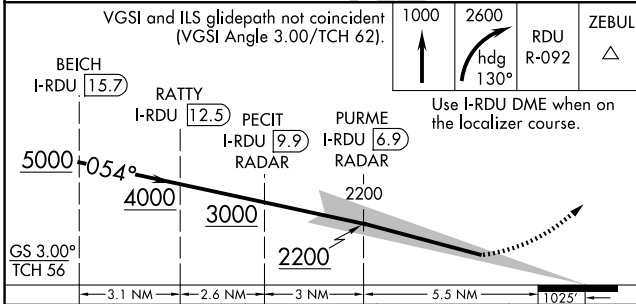
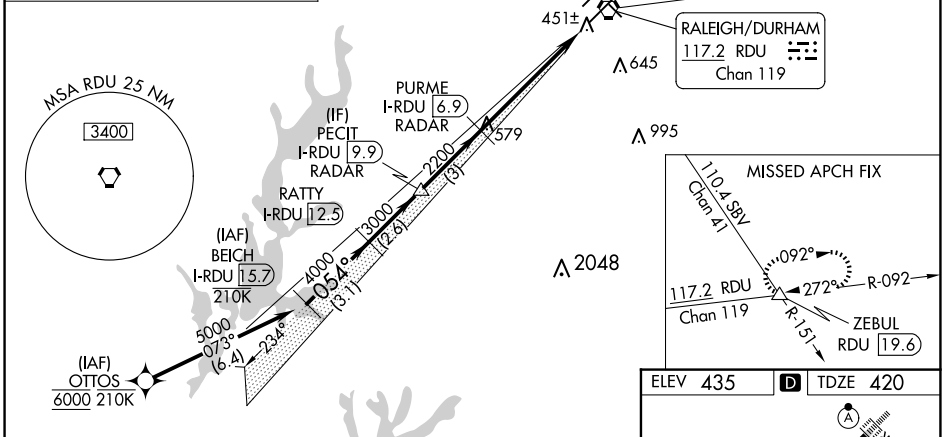
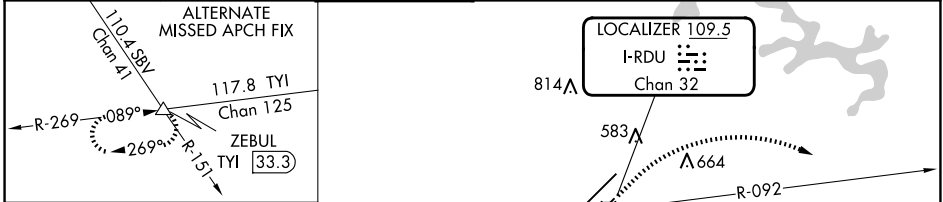
| | | |
|--|------------------------|---|
| LOC/DME I-RDU 109.5 Chan 32 | APP CRS 054° | Rwy Idg 7500 TDZE 420 Apt Elev 435 |
|--|------------------------|---|

ILS RWY 5R (SA CAT I & II)

RALEIGH-DURHAM INTL (RDU)

| | | | |
|---|--|-----------|---|
| RNAV 1-DME/DME/IRU or GPS or RADAR required for procedure entry. Simultaneous approach authorized. SA CAT I: Requires specific OPSPEC, MSPEC or LOA approval and use of HUD to DH. SA CAT II: Reduced lighting: Requires specific OPSPEC, MSPEC or LOA approval and use of autoland or HUD to touchdown. | | MALSR | MISSED APPROACH: Climb to 1000 then climbing right turn to 2600 on heading 130° and on RDU VORTAC R-092 to ZEBUL INT/RDU 19.6 DME and hold. |
|---|--|-----------|---|

| | | | | | |
|------------------------|---|--------------------------------------|-------------------------------|--------------------------|-------|
| D-ATIS 123.8 | RALEIGH APP CON 127.675 307.9 | RALEIGH TOWER 127.45 257.8 | GND CON 121.9 348.6 | CLNC DEL 120.1 | CPDLC |
|------------------------|---|--------------------------------------|-------------------------------|--------------------------|-------|



| | | | | |
|----------|-----------|---------------|--------|---|
| CATEGORY | A | B | C | D |
| S-ILS 5R | SA CAT I | RA 230/14 150 | DA 570 | |
| S-ILS 5R | SA CAT II | RA 183/12 100 | DA 520 | |

SA CATEGORY I & II ILS SPECIAL AIRCREW & AIRCRAFT CERTIFICATION REQUIRED

REIL Rwy 32
MIRL Rwy 14-32
HIRL Rwys 5R-23L and 5L-23R
TDZ/CL Rwys 23R, 23L and 5L

SE-2, 20 FEB 2025 to 20 MAR 2025

SE-2, 20 FEB 2025 to 20 MAR 2025