

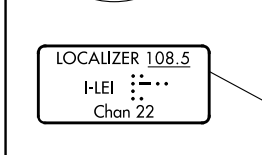
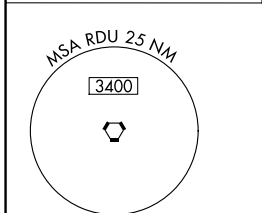
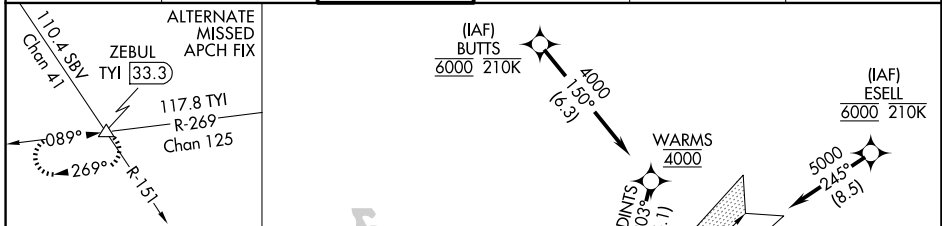
LOC/DME I-LEI 108.5 Chan 22	APP CRS 234°	Rwy Idg 7500 TDZE 435 Apt Elev 435
---	------------------------	---

ILS or LOC RWY 23L

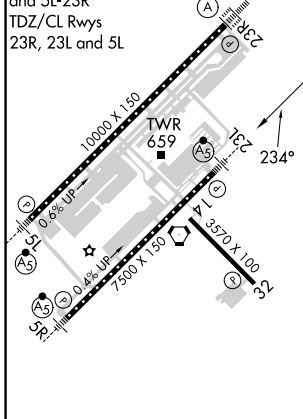
RALEIGH-DURHAM INTL (RDU)

RNAV 1-DME/DME/IRU or GPS or RADAR required for procedure entry. DME required for LOC only.	MALSR 	MISSED APPROACH: Climb to 1100 then climbing left turn to 2600 on heading 050° and RDU VORTAC R-092 to ZEBUL INT and hold.
⚠ Simultaneous approach authorized. For inop ALS, increase S-ILS 23L all Cats visibility to RVR 5500. Localizer unusable for coupled approaches below 1100 or within 2 NM of threshold.		

D-ATIS 123.8	RALEIGH APP CON 127.675 307.9	RALEIGH TOWER 127.45 257.8	GND CON 121.9 348.6	CLNC DEL 120.1	CPDLC
------------------------	---	---	-------------------------------	--------------------------	-------



ELEV 435	D	TDZE 435
REIL Rwy 32		
MIRL Rwy 14-32		
HIRL Rwys 5R-23L and 5L-23R		
TDZ/CL Rwys 23R, 23L and 5L		



1100	2600	ZEBUL RDU R-092	Localizer unusable from 1 NM from threshold.	DUWON I-LEI 15.6
* LOC only.				
BEGVE I-LEI 2.4	LEPEC I-LEI 3.7	APUCU I-LEI 6.8 RADAR	DOCAT I-LEI 10 RADAR	DINTS I-LEI 12.4
1200*	2200	3000	4000	5000
GS 3.00° TCH 56				
1 NM — 1.3 NM — 3.1 NM — 3.3 NM — 2.4 NM — 3.1 NM				
CATEGORY	A	B	C	D
S-ILS 23L		806/35	371 (400- ⁵ / ₈)	
S-LOC 23L		840/40	405 (500- ³ / ₄)	
C CIRCLING	960-1 ¹ / ₄	525 (600-1 ¹ / ₄)	1020-1 ¹ / ₂ 585 (600-1 ¹ / ₂)	1180-2 ¹ / ₂ 745 (800-2 ¹ / ₂)

SE-2, 20 FEB 2025 to 20 MAR 2025

SE-2, 20 FEB 2025 to 20 MAR 2025