

PACKK NINE DEPARTURE

D-ATIS
123.8
CLNC DEL
120.1
CPDLC
RALEIGH DEP CON
125.3 353.675 (055°-229°)
132.35 256.9 (230°-054°)

**TOP ALTITUDE:
6000**

FLAT ROCK
113.3 FAK
Chan 80

GREENSBORO
116.2 GSO
Chan 109

LIBERTY
113.0 LIB
Chan 77

RALEIGH-DURHAM
117.2 RDU
Chan 119

TAR RIVER
117.8 TYI
Chan 125

**NORTH DEPARTURE
132.35 256.9**

SPECIAL INSTRUCTIONS:
For appropriate departure
control frequency use
frequency depicted within
sector for route of flight
after RDU VORTAC.

NOTE: RADAR required.
NOTE: Turbojets only.

**SOUTH DEPARTURE
125.3 353.675**

FAYETTEVILLE
114.85 FAY
Chan 95(Y)

WILMINGTON
117.0 ILM
Chan 117

TAKEOFF MINIMUMS

- Rwy 14, 32: NA-ATC.
- Rwys 5L/R: Standard.
- Rwy 23L: Standard with minimum climb of 250' per NM to 2300.
- Rwy 23R: Standard with minimum climb of 240' per NM to 2100.

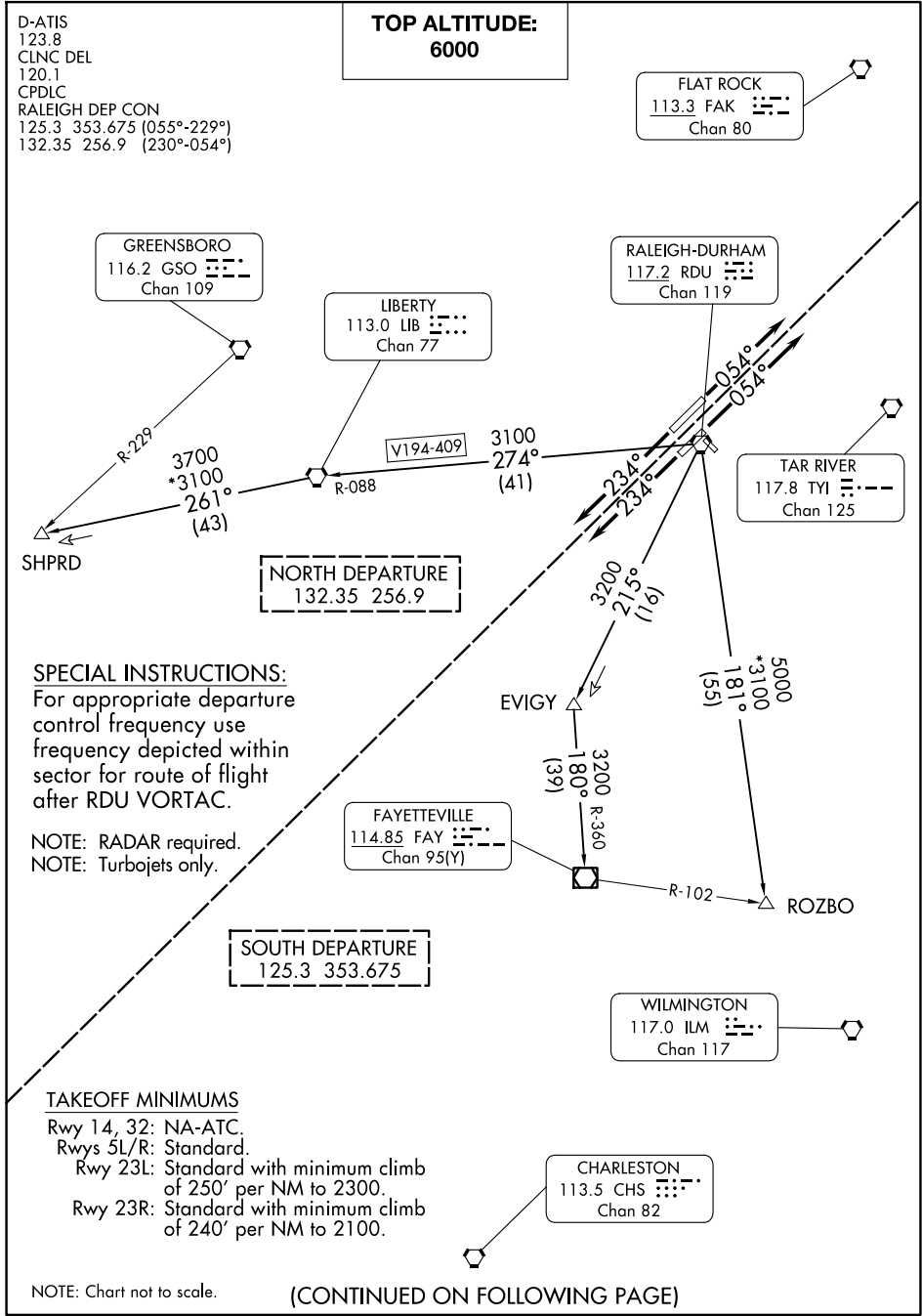
NOTE: Chart not to scale.

(CONTINUED ON FOLLOWING PAGE)

PACKK NINE DEPARTURE

SE-2, 20 FEB 2025 to 20 MAR 2025

SE-2, 20 FEB 2025 to 20 MAR 2025



PACKK NINE DEPARTURE



DEPARTURE ROUTE DESCRIPTION

TAKEOFF RUNWAYS 5L/R: Climb on heading 054°, or as assigned by ATC, thence. . . .

TAKEOFF RUNWAYS 23L/R: Climb on heading 234°, or as assigned by ATC, thence. . . .

. . . .for RADAR vectors to assigned/filed transition/fix/navaid/airway, maintain 6000, expect filed altitude ten minutes after departure.

FAYETTEVILLE TRANSITION (PACK9.FAY): From over RDU VORTAC on RDU R-215 to EVIGY, then on FAY R-360 to FAY VOR/DME.

ROZBO TRANSITION (PACK9.ROZBO): From over RDU VORTAC on RDU R-181 to ROZBO.

SHPRD TRANSITION (PACK9.SHPRD): From over RDU VORTAC on RDU R-274 and LIB R-088 to LIB VORTAC, then on LIB R-261 to SHPRD.

SE-2, 20 FEB 2025 to 20 MAR 2025

SE-2, 20 FEB 2025 to 20 MAR 2025