

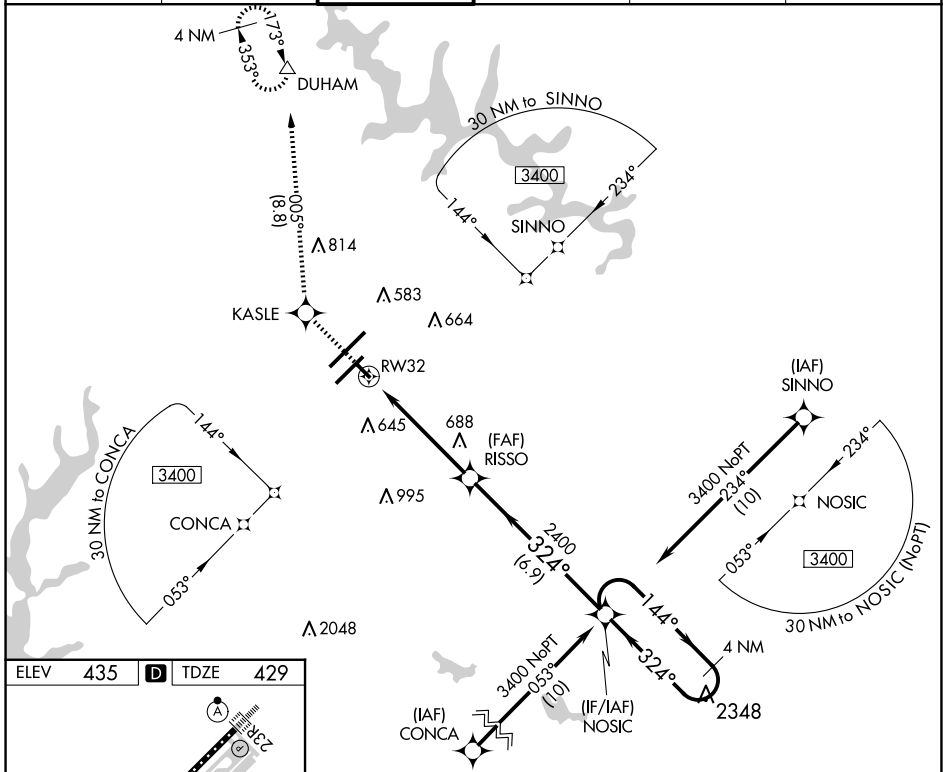
APP CRS	Rwy Idg	<b>3570</b>
<b>324°</b>	TDZE	<b>429</b>
	Apt Elev	<b>435</b>

# RNAV (GPS) RWY 32

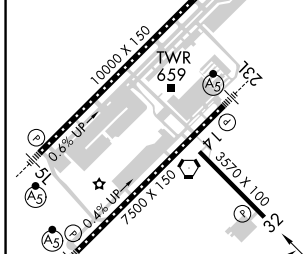
RALEIGH-DURHAM INTL (RDU)

RNP APCH.	Rwy 32 helicopter visibility reduction below 3/4 SM NA. Baro-VNAV NA below -15°C (5°F) or above 48°C (118°F).	MISSED APPROACH: Climb to 2200 direct KASLE and on track 005° to DUHAM and hold.
-----------	--	--

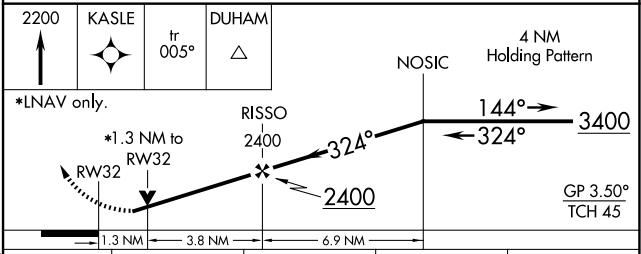
D-ATIS	RALEIGH APP CON	RALEIGH TOWER	GND CON	CLNC DEL	CPDLC
123.8	127.675 307.9	127.45 257.8	121.9 348.6	120.1	



ELEV	<b>435</b>	<b>D</b>	TDZE	<b>429</b>
------	------------	----------	------	------------



REIL Rwy 32  
 MIRL Rwy 14-32  
 HIRL Rwys 5R-23L and 5L-23R  
 TDZ/CL Rwys 23R, 23L and 5L



CATEGORY	A	B	C	D
LNAV/VNAV	DA	820-1 1/4 391 (400-1 1/4)		NA
LNAV MDA	1000-1	571 (600-1)	1000-1 1/2 571 (600-1 1/2)	NA
<b>C</b> CIRCLING	1000-1 1/4	565 (600-1 1/4)	1040-1 3/4 605 (700-1 3/4)	NA

SE-2, 20 FEB 2025 to 20 MAR 2025

SE-2, 20 FEB 2025 to 20 MAR 2025