

APP CRS 234°	Rwy Idg TDZE Apt Elev	7500 435 435
------------------------	-----------------------------	---

RNAV (RNP) Z RWY 23L

RALEIGH-DURHAM INTL (RDU)

RNP AR APCH-GPS.

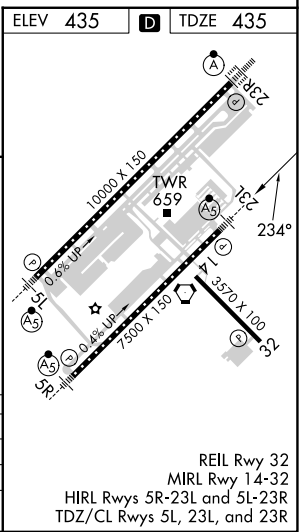
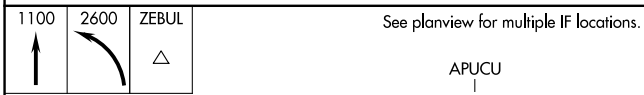
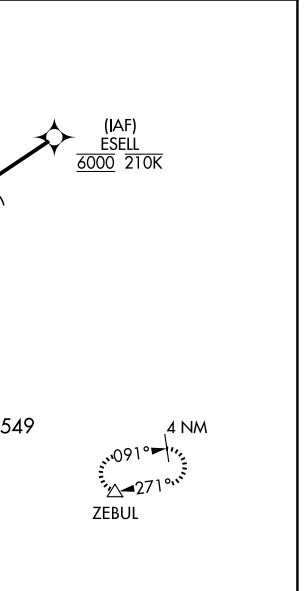
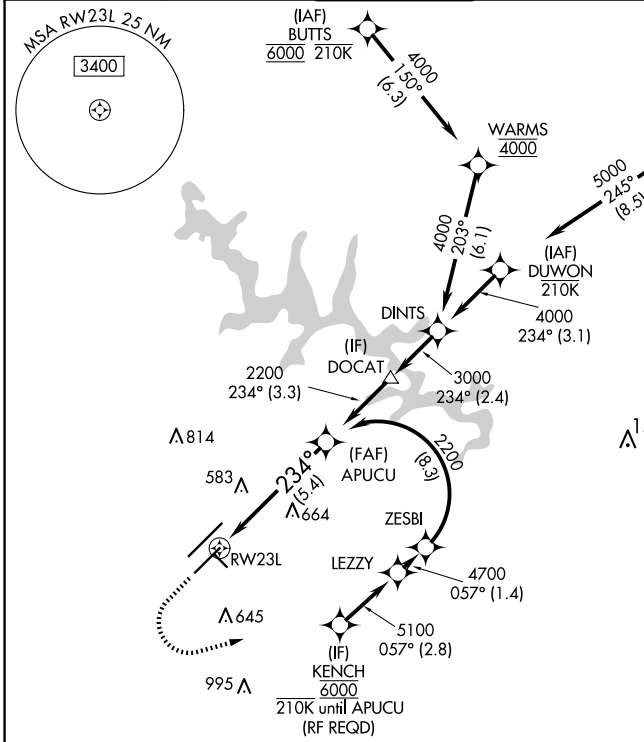
▼ For uncompensated Baro-VNAV systems, procedure NA below -12°C or above 54°C. Simultaneous approach authorized, except for arrivals at KENCH. For inop ALS, increase RNP 0.10 all Cats visibility to RVR 5500.

MALSR



MISSED APPROACH: Climb to 1100 then climbing left turn to 2600 direct ZEBUL and hold.

D-ATIS 123.8	RALEIGH APP CON 127.675 307.9	RALEIGH TOWER 127.45 257.8	GND CON 121.9 348.6	CLNC DEL 120.1	CPDLC
------------------------	---	--------------------------------------	-------------------------------	--------------------------	-------



1100	2600	ZEBUL	See planview for multiple IF locations.
RWY 23L		APUCU 2200	2200
5.4 NM		GP 3.00°	TCH 56

CATEGORY	A	B	C	D
RNP 0.10 DA		776/30	341 (400-%)	
RNP 0.30 DA		826/35	391 (400-%)	

AUTHORIZATION REQUIRED