


APP CRS	Rwy Idg	<b>7500</b>
<b>054°</b>	TDZE	<b>420</b>
	Apt Elev	<b>435</b>

# RNAV (RNP) Z RWY 5R

RALEIGH-DURHAM INTL (RDU)

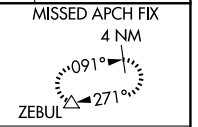
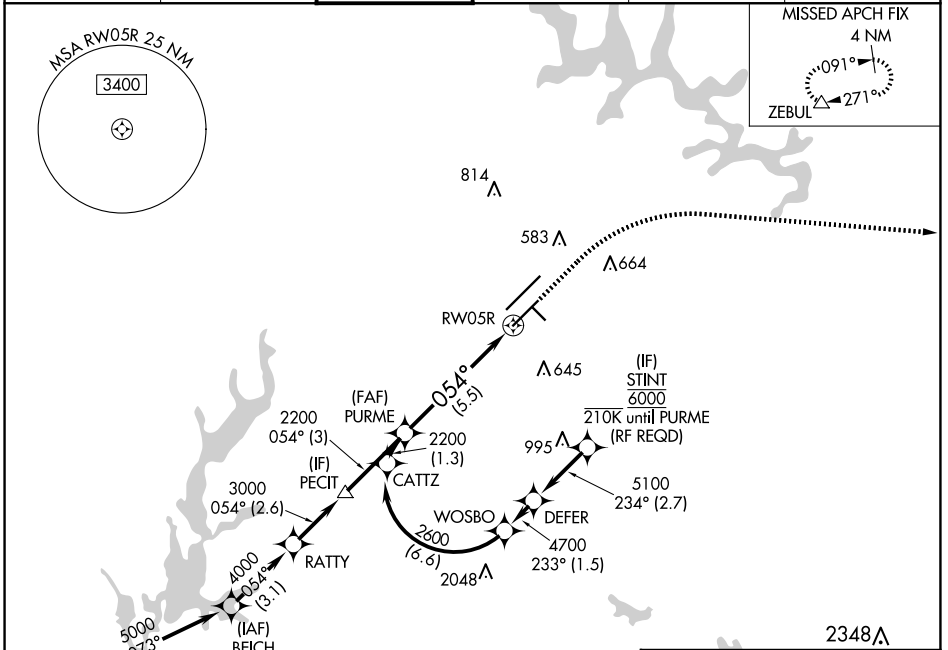
RNP AR APCH-GPS.

▼ For uncompensated Baro-VNAV systems, procedure NA below -12°C or above 54°C. For inop ALS, increase RNP 0.30 all Cats visibility to RVR 4500. Simultaneous approach authorized, except for arrivals at STINT.

MALSR 

MISSED APPROACH: Climb to 1000 then climbing right turn to 2600 direct ZEBUL and hold.

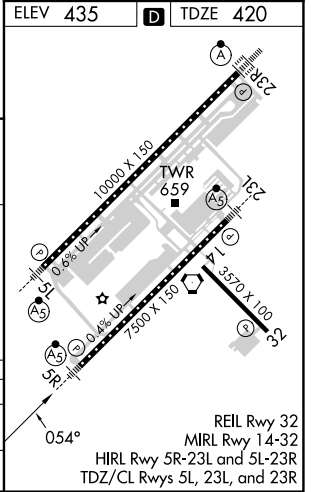
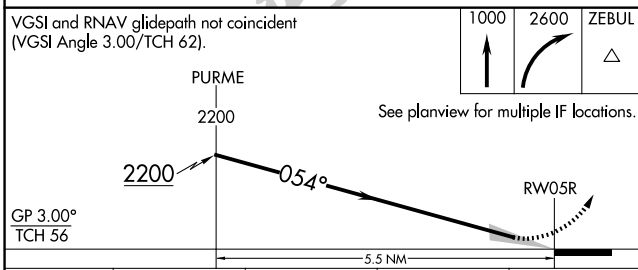
D-ATIS	RALEIGH APP CON	RALEIGH TOWER	GND CON	CLNC DEL	CPDLC
<b>123.8</b>	<b>127.675 307.9</b>	<b>127.45 257.8</b>	<b>121.9 348.6</b>	<b>120.1</b>	



SE-2, 20 FEB 2025 to 20 MAR 2025

SE-2, 20 FEB 2025 to 20 MAR 2025

ELEV 435	<b>D</b>	TDZE 420
----------	----------	----------



CATEGORY	A	B	C	D
RNP 0.30 DA		721/24	301 (400-½)	

**AUTHORIZATION REQUIRED**