

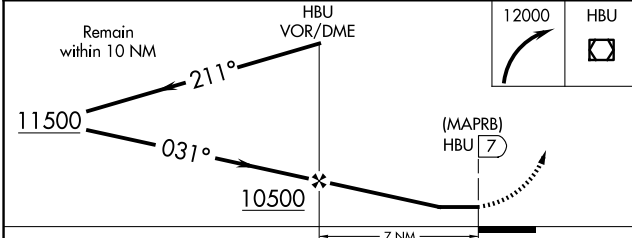
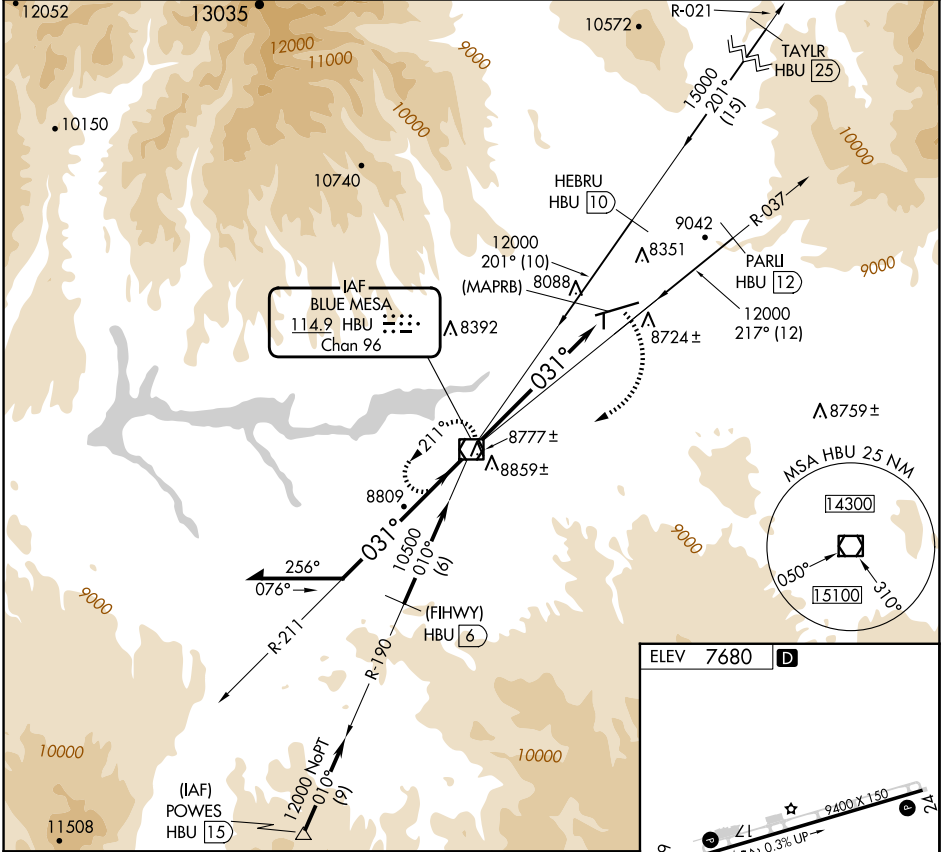
VOR/DME HBU 114.9 Chan 96	APP CRS 031°	Rwy Idg TDZE Apt Elev 7680	N/A N/A 7680
---	------------------------	---	---------------------------

VOR or GPS-A

GUNNISON-CRESTED BUTTE RGNL (GUC)

<p>Procedure NA when airport closed except by prior arrangement. Circling NA to Rws 17 and 35.</p>	<p>MISSED APPROACH: Climbing right turn to 12000 direct HBU VOR/DME and hold.</p>
--	---

AWOS-3PT 135.075	DENVER CENTER 124.5 350.25	UNICOM 122.7 (CTAF)
----------------------------	--------------------------------------	-------------------------------



ELEV 7680 **D**

Runway 24 details:

- 9000 x 1500** dimensions.
- 0.3% UP** slope.
- 2881 x 1500** dimensions.
- 0.5% UP** slope.
- 031°** heading.
- HIRL Rwy 6-24** and **REIL Rwy 24**.

CATEGORY	FAF to MAP 7 NM				
	A	B	C	D	
CIRCLING	9260-2	9340-2	9540-3	10040-3	Knots
	1580 (1600-2)	1660 (1700-2)	1860 (1900-3)	2360 (2400-3)	60 90 120 150 180
					Min:Sec
					7:00 4:40 3:30 2:48 2:20

SW-1, 20 FEB 2025 to 20 MAR 2025

SW-1, 20 FEB 2025 to 20 MAR 2025