

LOC/DME I-ACV 109.5 Chan 32	APP CRS 316°	Rwy Idg TDZE Apt Elev	5846 221 222
---	------------------------	-----------------------------	---

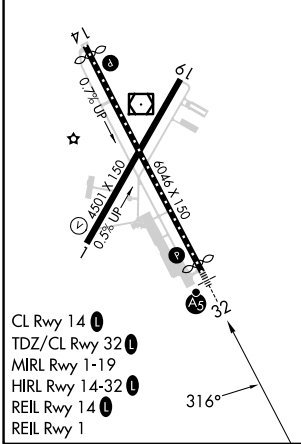
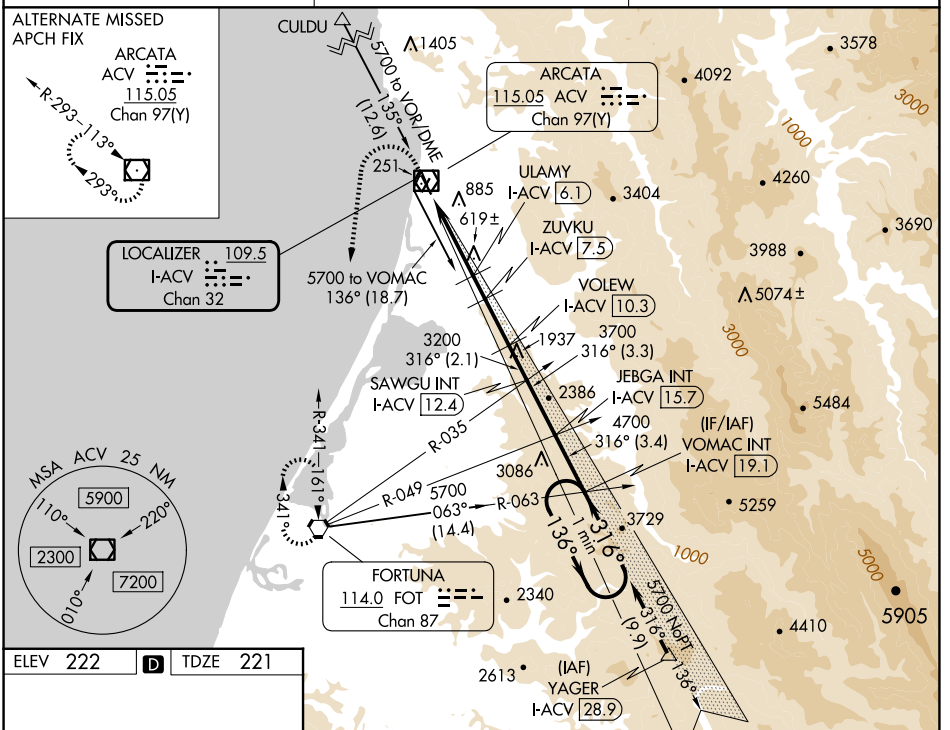
ILS or LOC RWY 32

CALIFORNIA REDWOOD COAST-HUMBOLDT COUNTY (ACV)

NA Circling NA northeast of Rwy 14-32. DME required.

MALSR MISSED APPROACH: Climb to 800 then climbing left turn to 3000 direct FOT VORTAC and hold.

ASOS 118.525	SEATTLE CENTER 124.85 306.3	UNICOM 123.0 (CTAF)
-------------------------------	--	--------------------------------------



800 3000 FOT Use I-ACV DME when on the localizer course. VGSI and ILS glidepath not coincident (VGSI Angle 3.00/TCH 43).

VOMAC I-ACV 19.1 One Minute Holding Pattern

***LOC only**

ULMY I-ACV 6.1 ZUVKU I-ACV 7.5 VOLEW I-ACV 10.3 JEBGA I-ACV 15.7

I-ACV 1.1 *I-ACV 3 1860* 2320* 3200 3700 4700 5700

GS 3.00° TCH 47

1.9 3.1 NM 1.4 NM 2.8 NM 2.1 NM 3.3 NM ←3.4 NM

CATEGORY	A	B	C	D
S-ILS 32	441/18 220 (300-1/2)			
S-LOC 32	880/24	659 (700-1/2)	880-1 3/8	659 (700-1 3/8)
C CIRCLING	880-1	658 (700-1)	880-1 7/8	880-2 658 (700-1 7/8)

SW-2, 20 FEB 2025 to 20 MAR 2025

SW-2, 20 FEB 2025 to 20 MAR 2025