

# RNAV (GPS) RWY 6

GALLUP MUNI (GUP)

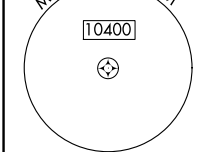
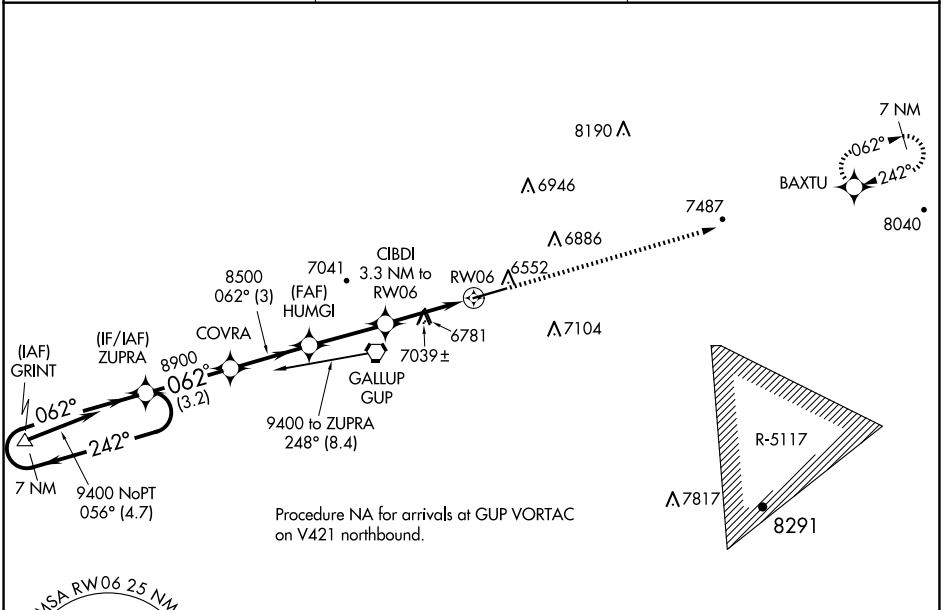
APP CRS <b>062°</b>	Rwy Idg <b>7312</b>
	TDZE <b>6465</b>
	Apt Elev <b>6472</b>

RNP APCH - GPS.

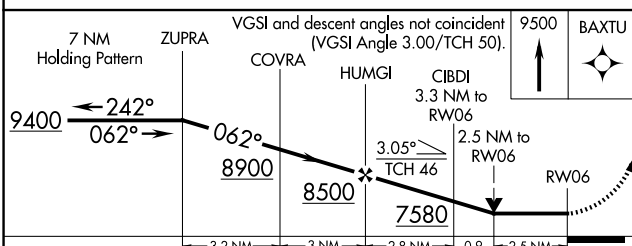
**▼** Rwy 6 helicopter visibility reduction below 3/4 SM NA. When local altimeter setting not received, use RQE altimeter setting and increase all MDAs 80 feet, increase LNAV Cat A visibility 1/4 SM. VDP NA with RQE altimeter setting.

**▲** MISSED APPROACH: Climb to 9500 direct BAXTU and hold.

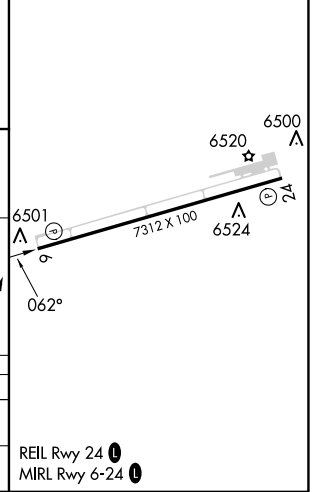
ASOS <b>118.375</b>	ALBUQUERQUE CENTER <b>124.325 288.25</b>	UNICOM <b>122.95 (CTAF) 0</b>
------------------------	---	----------------------------------



ELEV 6472	TDZE 6465
-----------	-----------



CATEGORY	A	B	C	D
LNAV MDA	7300-1 835 (900-1)	7300-1 1/4 835 (900-1 1/4)	7300-2 1/2	835 (900-2 1/2)
CIRCLING	7300-1 1/4	828 (900-1 1/4)	7460-3 988 (1000-3)	7720-3 1248 (1300-3)



SW-1, 20 FEB 2025 to 20 MAR 2025

SW-1, 20 FEB 2025 to 20 MAR 2025