

APP CRS **354°**
 Rwy Idg **5400**
 TDZE **2311**
 Apt Elev **2320**

RNAV (GPS) RWY 2

COEUR D'ALENE/PAPPY BOYINGTON FLD (COE)

RNP APCH-GPS.

- ▼ Rwy 2 helicopter visibility reduction below 1 SM NA.
- ▲ Straight-in Rwy 2 NA at night, Circling Rwy 2 NA at night.

MISSED APPROACH: Climb to 7000 direct ZEXEL and hold, continue climb-in-hold to 7000.

AWOS-3PT
135.075

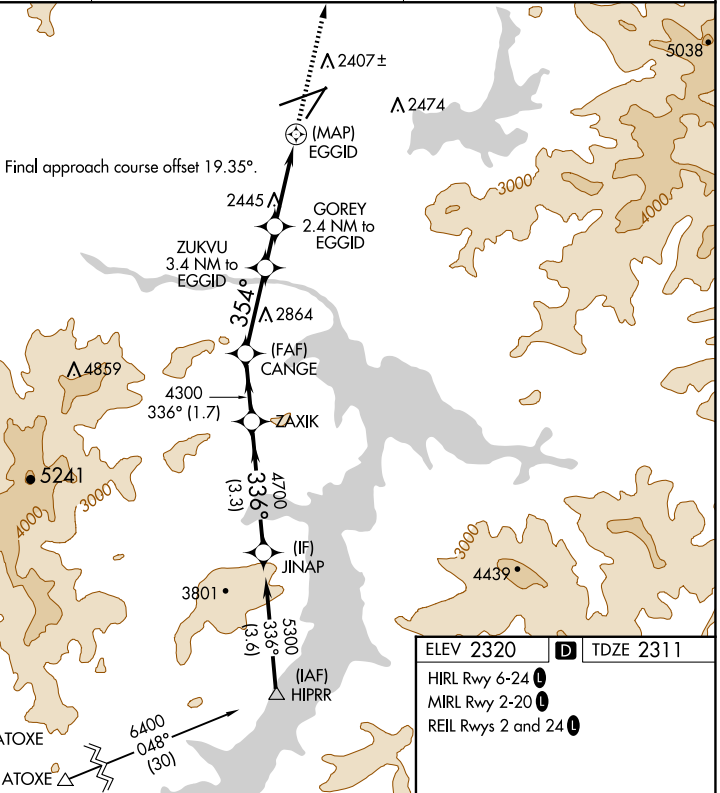
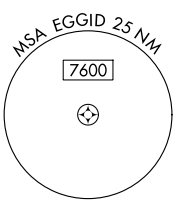
SPOKANE APP CON
132.1 263.0

UNICOM
122.8 (CTAF) 0

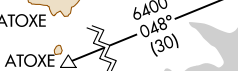
MISSED APCH FIX



Final approach course offset 19.35°.



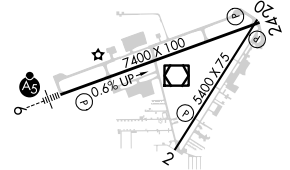
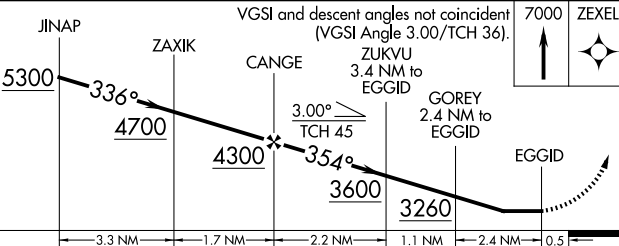
Procedure NA for arrivals at ATOXE on V253 south bound.



ELEV 2320 **D** TDZE 2311

- HIRL Rwy 6-24 0
- MIRL Rwy 2-20 0
- REIL Rwys 2 and 24 0

VGSI and descent angles not coincident (VGSI Angle 3.00°/TCH 36).



CATEGORY	A	B	C	D
LNVA MDA	2700-1	389 (400-1)	2700-1 ¹ / ₈	389 (400-1 ¹ / ₈)
C CIRCLING	2740-1 420 (500-1)	2880-1 560 (600-1)	3020-2 700 (700-2)	3940-3 1620 (1700-3)

RNAV (GPS) RWY 2

NW-1, 20 FEB 2025 to 20 MAR 2025

NW-1, 20 FEB 2025 to 20 MAR 2025