

APP CRS	Rwy Idg	<b>4999</b>
<b>153°</b>	TDZE	<b>120</b>
	Apt Elev	<b>120</b>

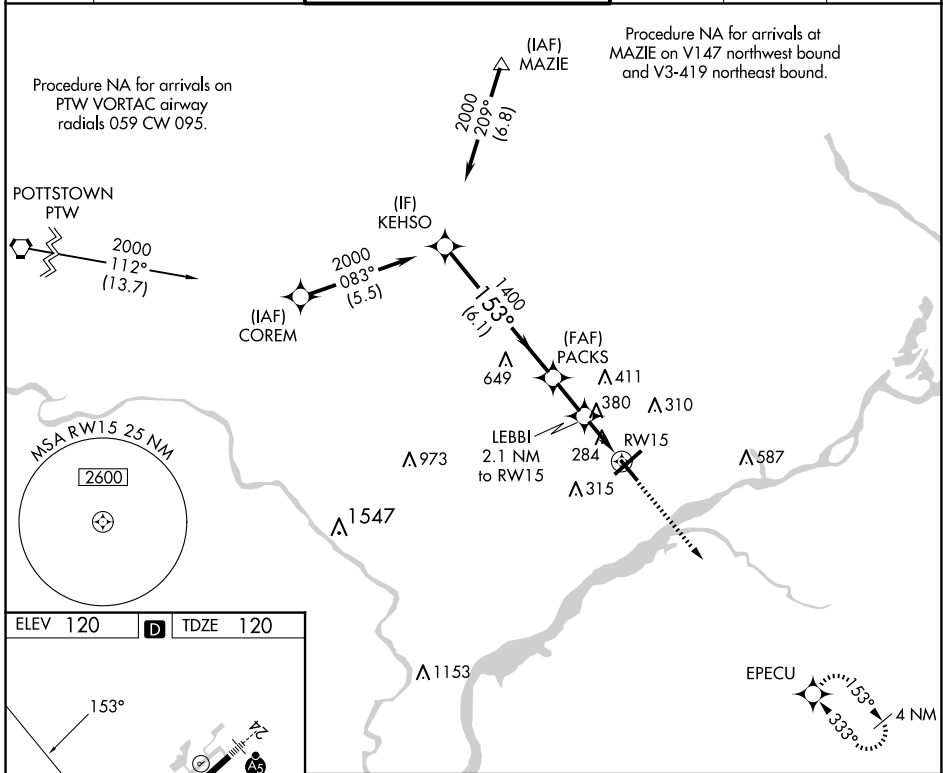
# RNAV (GPS) RWY 15

NORtheast PHILADELPHIA (PNE)

**⚠** When local altimeter setting not received, use Philadelphia Intl altimeter setting: increase all MDAs 60 feet and LNAV visibility Cat C/D ¼ SM and Circling visibility Cat C/D ¼ SM. DME/DME RNP-0.3 NA.

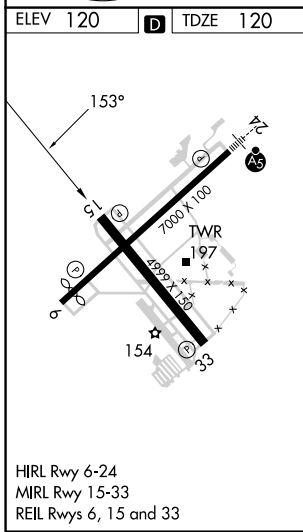
MISSED APPROACH: Climb to 2000 direct EPECU and hold.

ATIS <b>121.15</b>	PHILADELPHIA APP CON <b>123.8 291.7</b>	NORtheast PHILADELPHIA TOWER * <b>126.9 (CTAF) 278.8</b>	GND CON <b>121.7</b>	CLNC DEL <b>127.25</b>	UNICOM <b>122.95</b>
-----------------------	--	---	-------------------------	---------------------------	-------------------------



NE-4, 20 FEB 2025 to 20 MAR 2025

NE-4, 20 FEB 2025 to 20 MAR 2025



	KEHSO	PACKS	LEBBI 2.1 NM to RW15	RW15	EPECU
	2000	1400	820		2000
	153°	3.00°	TCH 39		
	6.1 NM	1.8 NM	2.1 NM		
CATEGORY	A	B	C	D	
LNAV MDA	660-1	540 (600-1)	660-1½	540 (600-1½)	
CIRCLING	700-1	580 (600-1)	720-1½	780-2	660 (700-2)