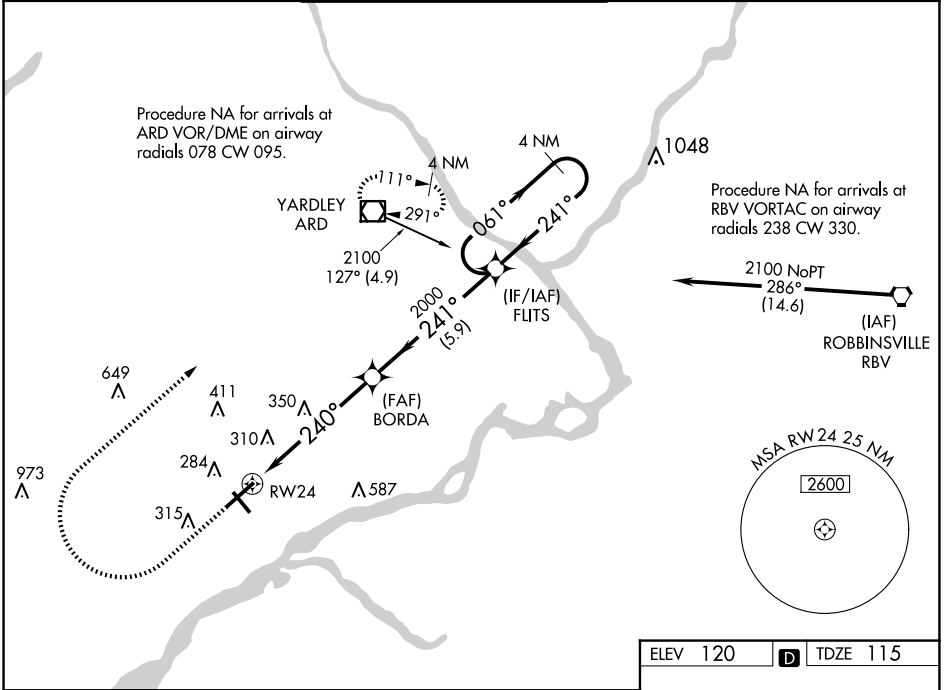


WAAS CH <b>45504</b> <b>W24A</b>	APP CRS <b>240°</b>	Rwy Idg TDZE Apt Elev	<b>6102</b> <b>115</b> <b>120</b>
--	------------------------	-----------------------------	---

# RNAV (GPS) RWY 24

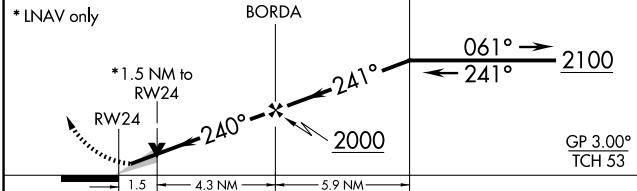
NORtheast PHILADELPHIA (PNE)

<p>For uncompensated Baro-VNAV systems, LNAV/VNAV NA below -1°C (11°F) or above 54°C (130°F). DME/DME RNP-0.3 NA.</p>	<p>MALS</p>	<p>MISSED APPROACH: Climb to 900 then climbing right turn to 3000 direct ARD VOR/DME and hold.</p>			
		<p>ATIS <b>121.15</b></p>	<p>PHILADELPHIA APP CON <b>123.8 291.7</b></p>	<p>NORtheast PHILADELPHIA TOWER ★ <b>126.9 (CTAF) 278.8</b></p>	<p>GND CON <b>121.7</b></p>

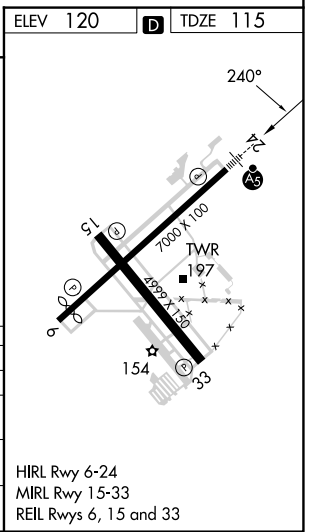


NE-4, 20 FEB 2025 to 20 MAR 2025

NE-4, 20 FEB 2025 to 20 MAR 2025



CATEGORY	A	B	C	D
LPV DA		315-1/2	200 (200-1/2)	
LNAV/VNAV DA		560-7/8	445 (500-7/8)	
LNAV MDA	640-1/2	525 (600-1/2)	640-1	525 (600-1)
CIRCLING	700-1	580 (600-1)	720-1 1/2 600 (600-1 1/2)	780-2 660 (700-2)



HIRL Rwy 6-24  
MIRL Rwy 15-33  
REIL Rws 6, 15 and 33