

# MECCA ONE DEPARTURE

SOCAL DEP CON  
135.275 251.1  
ASOS  
118.325  
CLNC DEL  
120.225  
UNICOM  
123.0 (CTAF)

TWENTYNINE PALMS  
114.2 TNP  
Chan 89

PALM SPRINGS  
115.5 PSP  
Chan 102

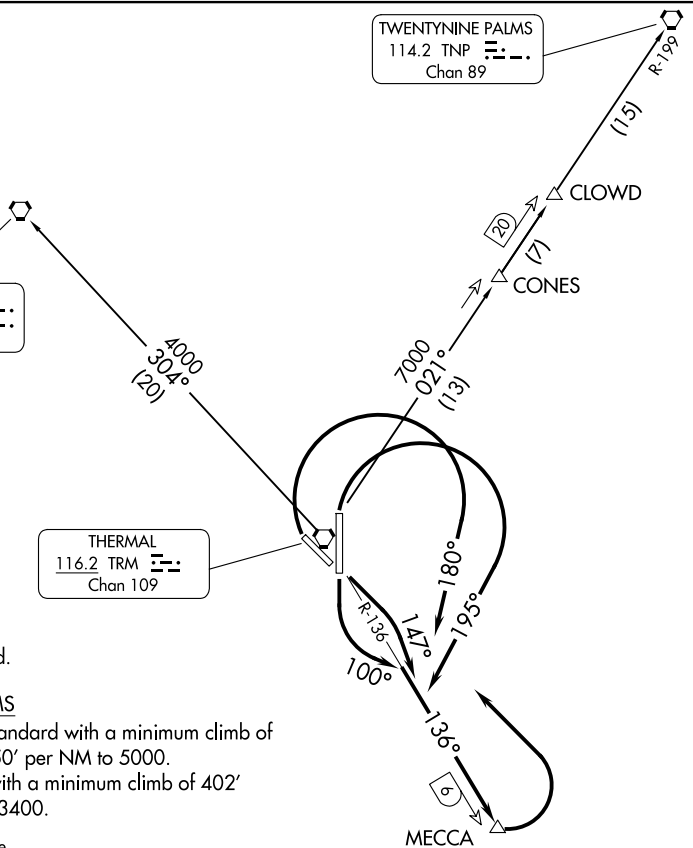
THERMAL  
116.2 TRM  
Chan 109

NOTE: DME required.

### TAKEOFF MINIMUMS

Rwys 12, 17, 30: Standard with a minimum climb of  
250' per NM to 5000.  
Rwy 35: Standard with a minimum climb of 402'  
per NM to 3400.

NOTE: Chart not to scale.



### DEPARTURE ROUTE DESCRIPTION

**TAKEOFF RUNWAY 12:** Climbing right turn heading 147° to intercept TRM VORTAC R-136 to MECCA, then climbing left turn direct TRM VORTAC. Thence. . .

**TAKEOFF RUNWAY 17:** Climbing left turn heading 100° to intercept TRM VORTAC R-136 to MECCA, then climbing left turn direct TRM VORTAC. Thence. . .

**TAKEOFF RUNWAY 30:** Climbing right turn heading 180° to intercept TRM VORTAC R-136 to MECCA, then climbing left turn direct TRM VORTAC. Thence. . .

**TAKEOFF RUNWAY 35:** Climbing right turn heading 195° to intercept TRM VORTAC R-136 to MECCA, then climbing left turn direct TRM VORTAC. Thence. . .

. . . then on (assigned transition). Expect filed altitude 10 minutes after departure.

**PALM SPRINGS TRANSITION (MECCA1.PSP):** From over TRM VORTAC on TRM R-304 to PSP VORTAC.

**TWENTY NINE PALMS TRANSITION (MECCA1.TNP):** From over TRM VORTAC on TRM R-021 and TNP R-199 to TNP VORTAC.

# MECCA ONE DEPARTURE

SW-3, 20 FEB 2025 to 20 MAR 2025

SW-3, 20 FEB 2025 to 20 MAR 2025