

VORTAC TRM 116.2 Chan 109	APP CRS 316°	Rwy ldg TDZE Apt Elev 4995 -121 -115
---	------------------------	--

VOR RWY 30

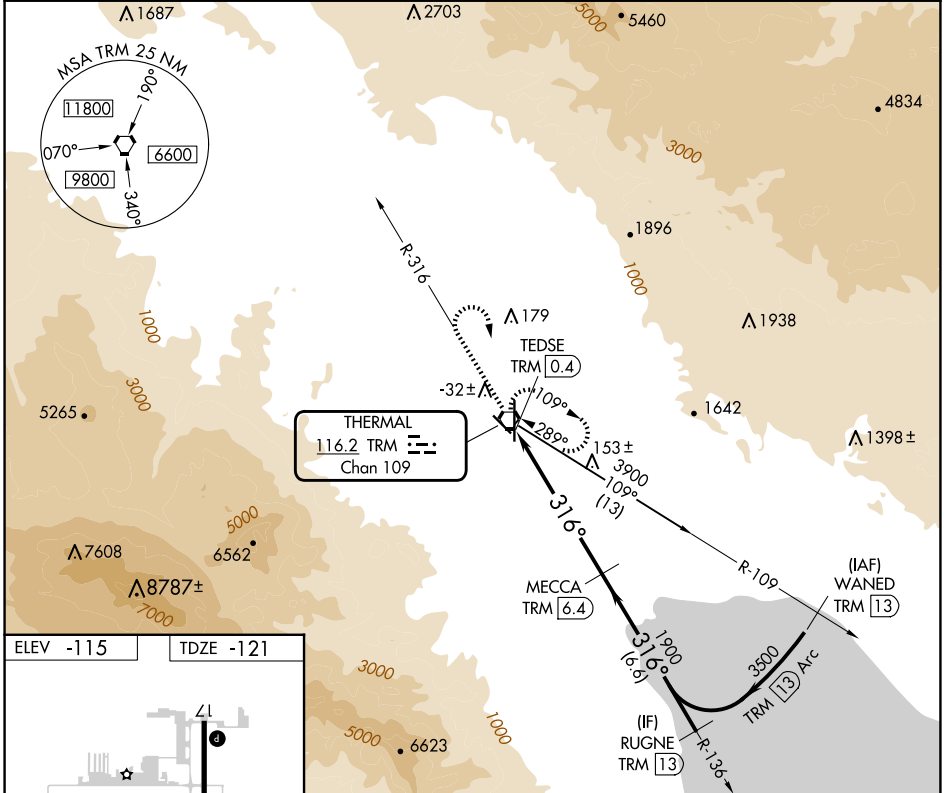
JACQUELINE COCHRAN RGNL (TRM)

DME required.

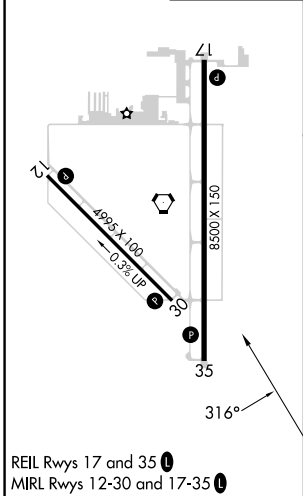
⚠ Rwy 30 helicopter visibility reduction below ¾ SM NA.

MISSED APPROACH: Climb to 1300 on TRM VORTAC R-316 then climbing right turn to 5400 direct TRM VORTAC and hold, continue climb-in-hold to 5400.

ASOS 118.325	SOCAL APP CON 135.275 251.1	CLNC DEL 120.225	UNICOM 123.0 (CTAF) 0
------------------------	---------------------------------------	----------------------------	---------------------------------



ELEV -115	TDZE -121
-----------	-----------



1300 5400 TRM VGSI and descent angles not coincident (VGSI Angle 3.00/TCH 25).

TRM R-316 TRM VORTAC TRM TEDSE TRM [0.4] TRM 1.7 TRM MECCA TRM [6.4] TRM RUGNE TRM [13] 3500 1900 316° 3.13° TCH 45

MECCA TRM [6.4]	TRM [1.7]	TRM [0.4]	TRM [13]
1.3	4.7 NM	6.6 NM	

CATEGORY	A	B	C	D
S-30	300-1 421 (500-1)		300-1½ 421 (500-1½)	
CIRCLING	320-1 435 (500-1)	340-1 455 (500-1)	460-1½ 575 (600-1½)	780-3 895 (900-3)