

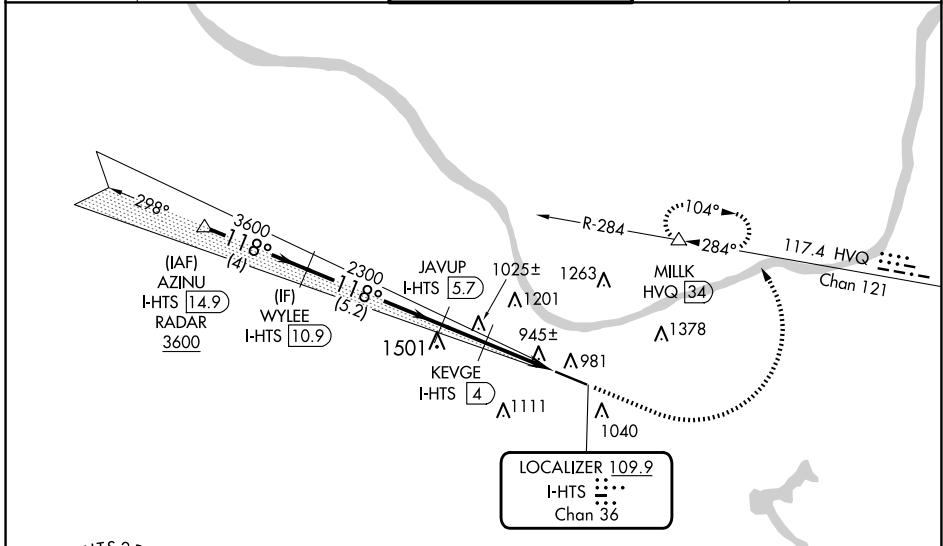
LOC/DME I-HTS 109.9 Chan 36	APP CRS 118°	Rwy Idg 6516 TDZE 828 Apt Elev 828
--	------------------------	---

ILS or LOC RWY 12

TRI-STATE/MILTON J FERGUSON FLD (HTS)

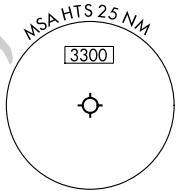
DME required. RADAR required for procedure entry.		MALSR 	MISSED APPROACH: Climb to 2800 then climbing left turn to 4000 on heading 005° and HVQ VOR/DME R-284 to MILK/HVQ VOR/DME 34 DME and hold, continue to climb-in-hold to 4000.	
 For inop ALS, increase S-LOC 12 Cts C and D visibility to RVR 5500. *RVR 1800 authorized with use of FD or AP or HUD to DA.				

ATIS 125.2	HUNTINGTON APP CON 119.75 270.1	HUNTINGTON TOWER 118.5 270.1	GND CON 121.9	CLNC DEL 118.05
----------------------	---	--	-------------------------	---------------------------



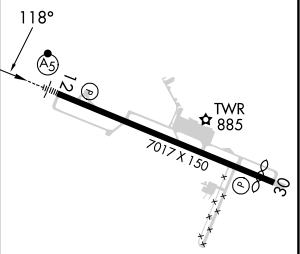
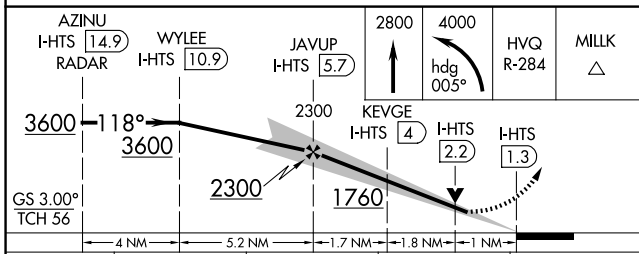
NE-4, 20 FEB 2025 to 20 MAR 2025

NE-4, 20 FEB 2025 to 20 MAR 2025



CAUTION: Fuel burning stacks 2 miles west of Rwy 12 may be mistaken for MALSR.

ELEV 828	D	TDZE 828
----------	----------	----------



CATEGORY	A	B	C	D
S-ILS 12*	1028/24 200 (200-½)			
S-LOC 12	1200/24	372 (400-½)	1200/35	372 (400-⅝)
C CIRCLING	1300-1 472 (500-1)	1380-1 552 (600-1)	1520-2 692 (700-2)	1740-3 912 (1000-2)

REIL Rwy 30
HIRL Rwy 12-30