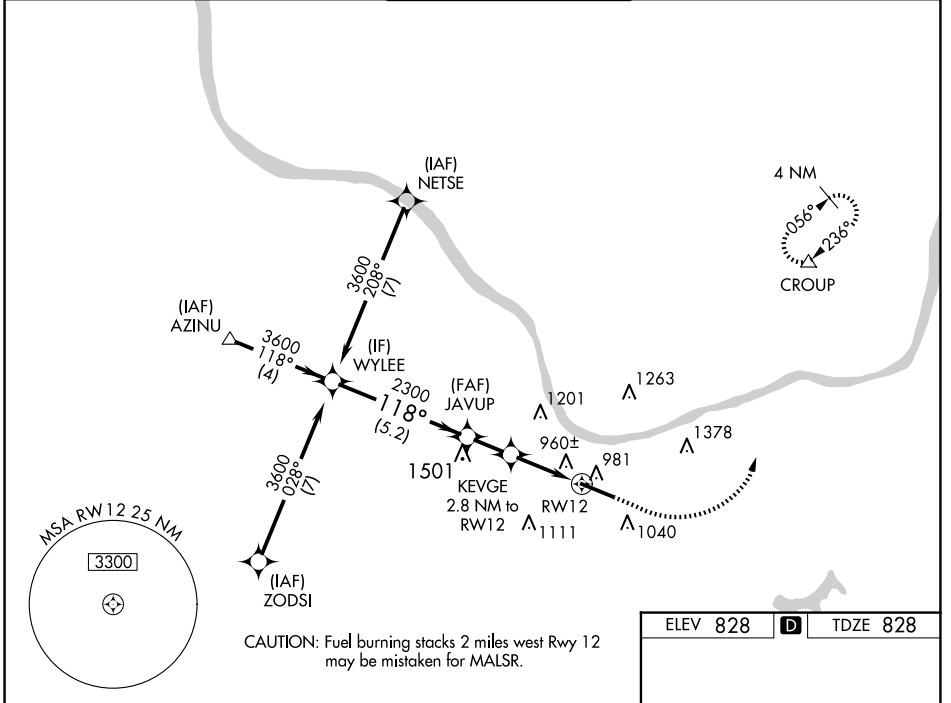


WAAS CH <b>45699</b> <b>W12A</b>	APP CRS <b>118°</b>	Rwy Idg TDZE Apt Elev	<b>6516</b> <b>828</b> <b>828</b>
--	------------------------	-----------------------------	---

# RNAV (GPS) RWY 12

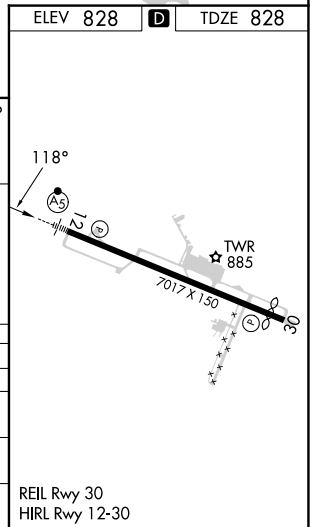
TRI-STATE/MILTON J FERGUSON FLD (HTS)

RNP APCH - GPS.		MALSR	MISSED APPROACH: Climb to 1700 then climbing left turn to 4000 direct CROUP and hold, continue to climb-in-hold to 4000.	
<p>⚠ For uncompensated Baro-VNAV systems, LNAV/VNAV NA below -14°C or above 54°C.</p> <p>⚠ For inop ALS, increase LNAV/VNAV all Cats visibility to RVR 4500.</p> <p>* RVR 1800 authorized with use of FD or AP or HUD to DA.</p>				
ATIS <b>125.2</b>	HUNTINGTON APP CON <b>119.75 270.1</b>	HUNTINGTON TOWER <b>118.5 270.1</b>	GND CON <b>121.9</b>	CLNC DEL <b>118.05</b>



NE-4, 20 FEB 2025 to 20 MAR 2025

NE-4, 20 FEB 2025 to 20 MAR 2025



	1700	4000	CROUP
WYLEE	JAVUP	KEVGE	
3600	2300	2.8 NM to RWY 12	
GP 3.00°		1.1 NM to RWY 12	
TCH 56	1760	RWY 12	
	5.2 NM	1.7 NM	1.1 NM
CATEGORY	A	B	C
LPV DA*		1028/24	200 (200-½)
LNAV/VNAV DA		1121/24	293 (300-½)
LNAV MDA	1220/24	392 (400-½)	392 (400-⅝)
CIRCLING	1300-1 472 (500-1)	1380-1 552 (600-1)	1520-2 692 (700-2)
			1740-3 912 (1000-3)
			REIL Rwy 30 HIRL Rwy 12-30