

# BUCKLEY ONE DEPARTURE (BKF1 • BEEKR)

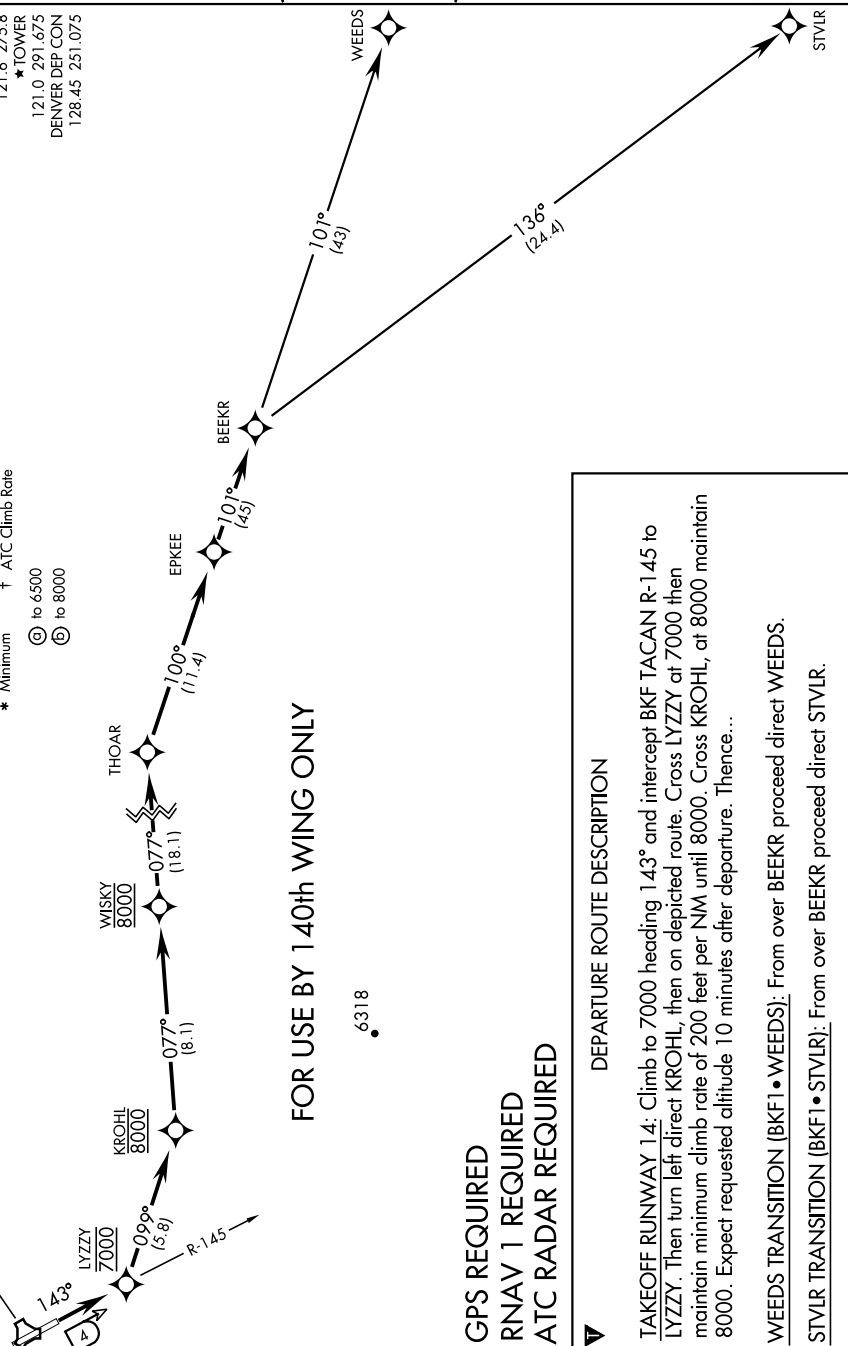
AURORA, COLORADO

ATIS ★ 119.675  
 CLNC DEL  
 121.6 275.8  
 GND CON  
 121.6 275.8  
 ★ TOWER  
 121.0 291.675  
 DENVER DEP CON  
 128.45 251.075

Rwy	Knots	60	120	180	240	300	360
★ 14	Ⓞ V/V (fpm)	330	660	990	1320	1650	1980
† 14	Ⓞ V/V (fpm)	478	956	1434	1912	2390	2868

\* Minimum † ATC Climb Rate

Ⓞ to 6500  
 Ⓞ to 8000



### FOR USE BY 140th WING ONLY

6318

**GPS REQUIRED**  
**RNAV 1 REQUIRED**  
**ATC RADAR REQUIRED**

#### DEPARTURE ROUTE DESCRIPTION

**TAKEOFF RUNWAY 14:** Climb to 7000 heading 143° and intercept BKF TACAN R-145 to LYZZY. Then turn left direct KROHLL, then on depicted route. Cross LYZZY at 7000 then maintain minimum climb rate of 200 feet per NM until 8000. Cross KROHLL, at 8000 maintain 8000. Expect requested altitude 10 minutes after departure. Thence...

**WEEDS TRANSITION (BKF1 • WEEDS):** From over BEEKR proceed direct WEEDS.

**STVLR TRANSITION (BKF1 • STVLR):** From over BEEKR proceed direct STVLR.

# BUCKLEY ONE DEPARTURE (BKF1 • BEEKR)

Orig 04JAN18

AURORA, COLORADO

BUCKLEY SFB (KBKF)