

# HI-ILS or LOC/DME RWY 32

LOC I-BKF <b>109.7</b>	APCH CRS <b>323°</b>	Rwy ldg <b>11,006</b> TDZE <b>5663</b> Arprt Elev <b>5663</b>
---------------------------	-------------------------	---

AL-538 [USAF]

BUCKLEY SFB (KBKF)

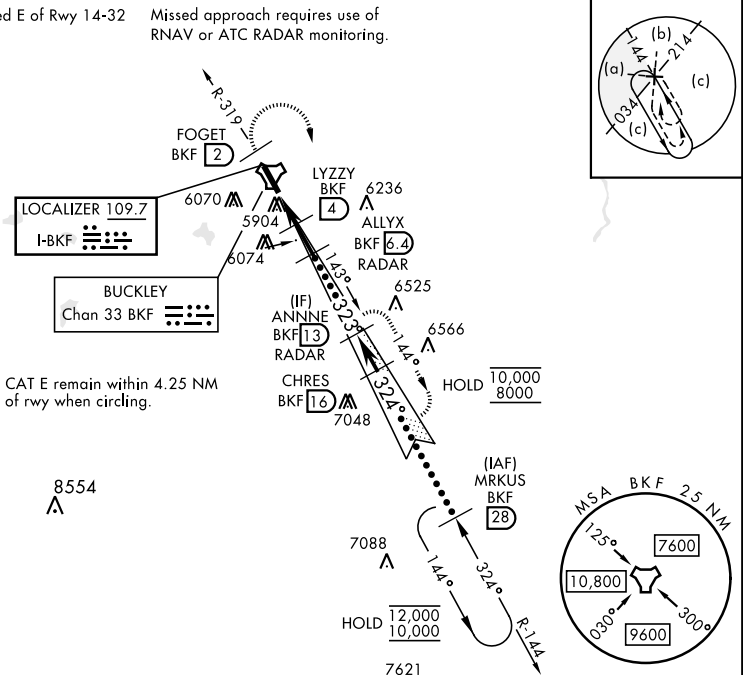
\* When ALS inop, increase CAT CDE RVR to 40 and vis to 3/4 miles.  
 \*\* When ALS inop, increase CAT CDE vis to 1 1/4 miles.
 

 ALSF-1  

 MISSED APPROACH: Climb on BKF TACAN R-319 to FOGET, then climbing right turn to 8200 and intercept BKF R-144 to ANNNE and hold or as directed by ATC.

ATIS ★ <b>119.675 259.3</b>	DENVER APP CON <b>128.45 251.075</b>	TOWER ★ <b>121.0 291.675</b>	GND CON <b>121.6 275.8</b>	CLNC DEL <b>121.6 275.8</b>
--------------------------------	---	---------------------------------	-------------------------------	--------------------------------

\*\*\* Circling not authorized E of Rwy 14-32 Missed approach requires use of RNAV or ATC RADAR monitoring.

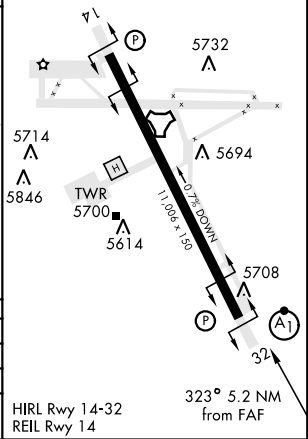
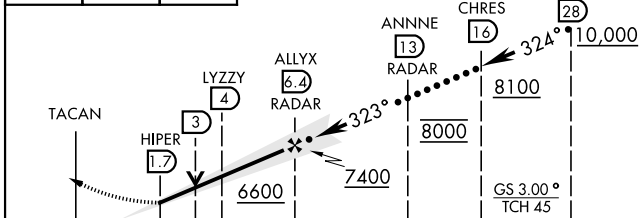


CAT E remain within 4.25 NM of rwy when circling.

8554

ELEV 5663	TDZE 5663
-----------	-----------

EMERG SAFE ALT 100 NM 16,500



0.5 NM	2.3 NM	2.4 NM		
CATEGORY	C	D	E	
S-ILS 32*	5863/24	200	(200-1/2)	
S-LOC 32**	6280-13/8	617	(700-13/8)	
CIRCLING ***	6360-2	6400-2 1/4	6420-2 3/4	
	697 (700-2)	737 (800-2 1/4)	757 (800-2 3/4)	

# HI-ILS or LOC/DME RWY 32

SW-1, 20 FEB 2025 to 20 MAR 2025

SW-1, 20 FEB 2025 to 20 MAR 2025