

APCH CRS <b>323°</b>	Rwy Idg <b>11,006</b>
	TDZE <b>5663</b>
	Arprt Elev <b>5663</b>

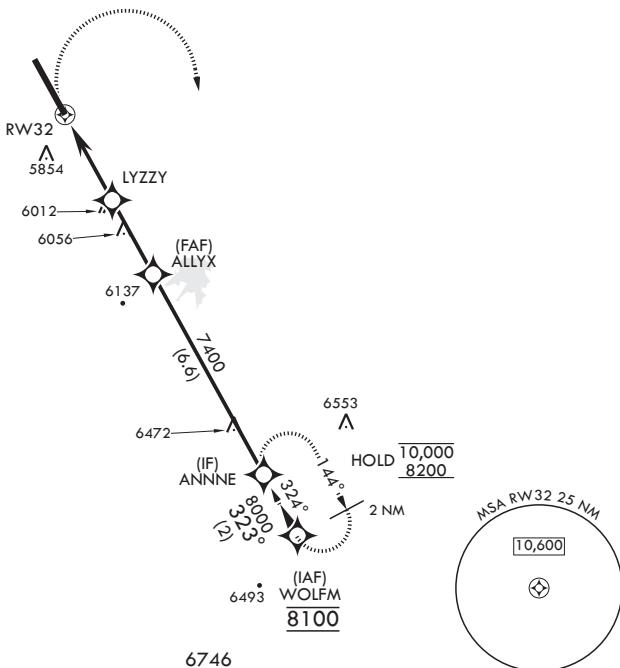
AL-538 (USAF)

BUCKLEY SFB (KBKF)

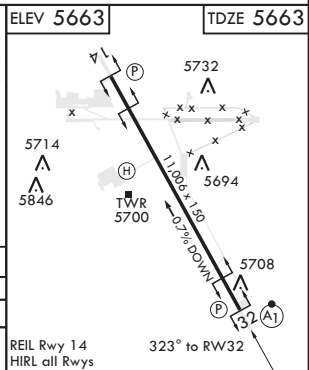
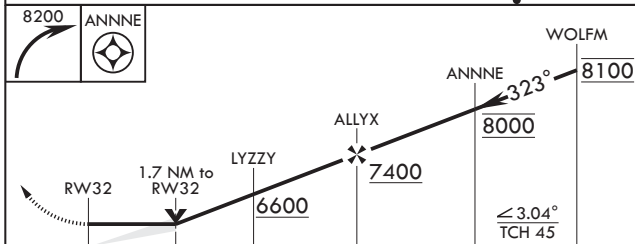
GPS required	ALSF-1	MISSED APPROACH: Climbing right turn to 8200 to ANNNE and hold or as directed by ATC.
* When ALS inop increase CAT AB RVR to 55, vis to 1 mile; CAT CD vis to 1 3/4 miles. ** Circling NA East of Rwy 14-32.		

ATIS* <b>119.675 259.3</b>	DENVER APP CON/DEP CON <b>128.45 251.075</b>	TOWER* <b>121.0 291.675</b>	GND CON <b>121.6 275.8</b>	CLNC DEL <b>121.6 275.8</b>
-------------------------------	---	--------------------------------	-------------------------------	--------------------------------

DME/DME RNP -0.3 NA



EMERG SAFE ALT 100 NM 16,500



CATEGORY	A	B	C	D
LNAV MDA*	6260/24	597 (600-1/2)	6260-1 1/4	597 (600-1 1/4)
CIRCLING**	6260-1	597 (600-1)	6360-2 697 (700-2)	6400-2 1/4 737 (800-2 1/4)

REIL Rwy 14  
HIRL all Rwys

SW-1, 20 FEB 2025 to 20 MAR 2025

SW-1, 20 FEB 2025 to 20 MAR 2025