

APP CRS **270°**  
 Rwy Idg **5005**  
 TDZE **956**  
 Apt Elev **983**

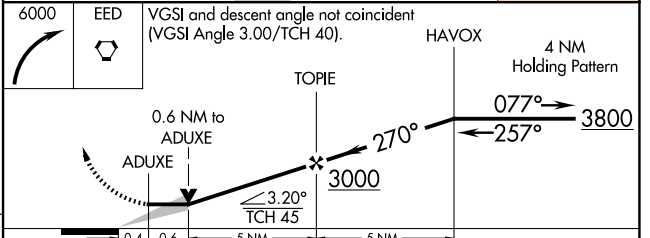
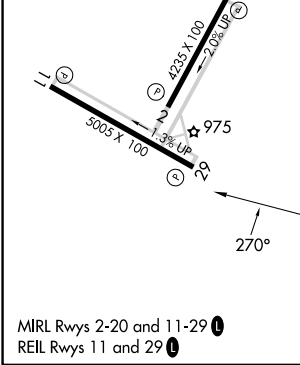
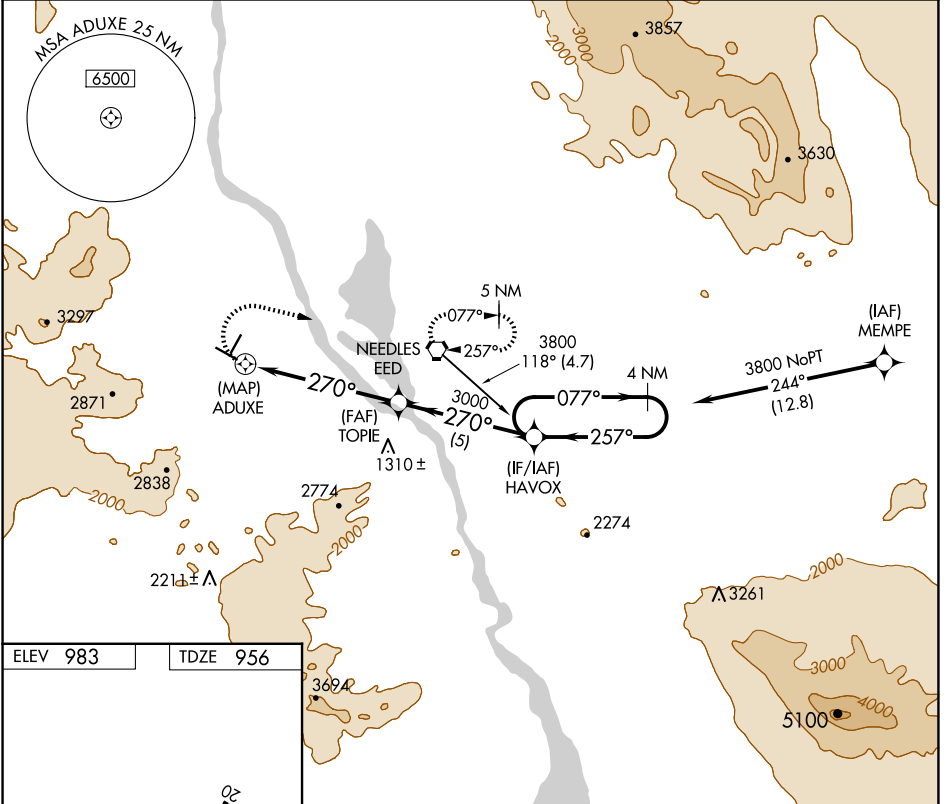
# RNAV (GPS) RWY 29

NEEDLES (EED)

⚠ Straight-in minimums not authorized at night.  
 GPS or RNP-0.3 required. DME/DME RNP-0.3 NA.  
 Circling NA for Cats C and D south of Rwy 11-29.

⚠ MISSED APPROACH: Climbing right turn to 6000 direct to EED VORTAC and hold.

ASOS <b>128.325</b>	LOS ANGELES CENTER <b>134.65 360.65</b>	UNICOM <b>123.0 (CTAF)</b>
------------------------	--	-------------------------------



CATEGORY	A	B	C	D
LNAV MDA	1300-1 344 (400-1)			1300-1½ 344 (400-1½)
CIRCLING	1560-1 577 (600-1)	1680-1 697 (700-1)	1680-2 697 (700-2)	1960-3 977 (1000-3)

SW-3, 20 FEB 2025 to 20 MAR 2025

SW-3, 20 FEB 2025 to 20 MAR 2025