

HI-TACAN Z RWY 13

TACAN OFF Chan 54	APCH CRS 122°	Rwy ldg 10,695 TDZE 1048 Arpt Elev 1048
-----------------------------	-------------------------	--

[USAF]

OFFUTT AFB (KOFF)

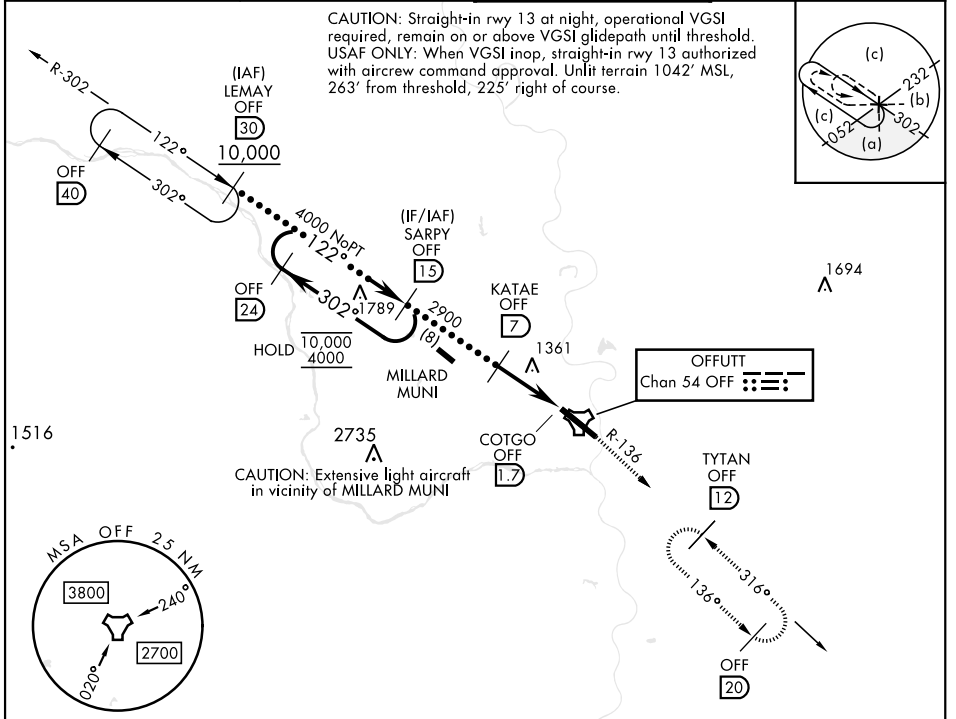
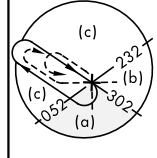
⚠ * When ALS inop, increase vis to 1½ miles.
** Circling not authorized N of Rwy 13-31.

ALSIF-1 **(A1)**

MISSED APPROACH: Climb to 3000 via OFF TACAN R-136 to TYTAN and hold.

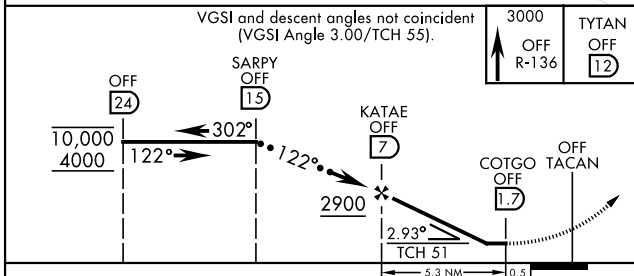
ATIS 126.025 273.5	OMAHA APP CON 124.5 263.0 (E) 135.875 354.05 (W)	TOWER 123.7 279.625	GND CON 121.7 289.4
------------------------------	--	-------------------------------	-------------------------------

CAUTION: Straight-in rwy 13 at night, operational VGSi required, remain on or above VGSi glidepath until threshold. USAF ONLY: When VGSi inop, straight-in rwy 13 authorized with aircrew command approval. Unlit terrain 1042' MSL, 263' from threshold, 225' right of course.



CAUTION: Extensive light aircraft in vicinity of MILLARD MUNI

EMERG SAFE ALT 100 NM 4700



ELEV 1048	TDZE 1048
Rwy 13 ldg 10,695' Rwy 31 ldg 10,612'	

CATEGORY	C	D	E
S-13 *	1620-1¼	572	(600-1¼)
C CIRCLING**	1660-1¼ 612 (700-1¼)	1940-3	892 (900-3)

HIRL Rwy 13-31
Rwy 13-31 ALS nstd

HI-TACAN Z RWY 13

NC-2, 20 FEB 2025 to 20 MAR 2025

NC-2, 20 FEB 2025 to 20 MAR 2025