

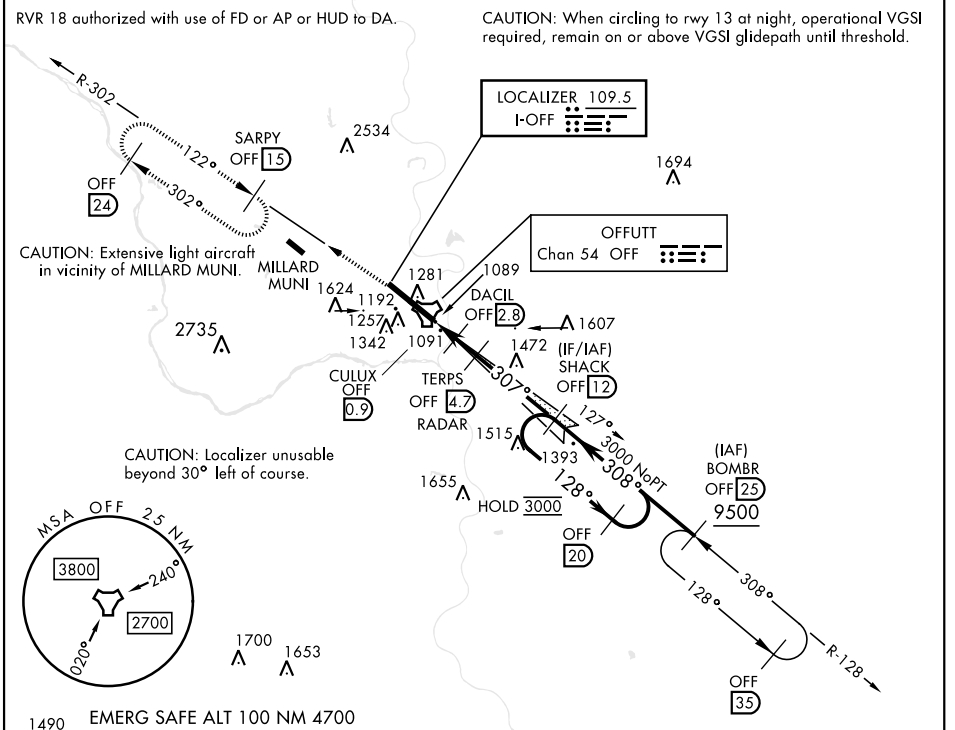
OMAHA, NEBRASKA

ILS or LOC Y RWY 31

LOC I-OFF 109.5	APCH CRS 307°	Rwy Ildg 10,612 TDZE 991 Arprt Elev 1048	[USAF]	OFFUTT AFB (KOFF)
---------------------------	-------------------------	---	--------	-------------------

RADAR or DME required.	ALSF-1 	MISSED APPROACH: Climb to 3000 via OFF TACAN R-302 to SARPY and hold.
------------------------	------------	---

ATIS 126.025 273.5	OMAHA APP CON 124.5 263.0 (E) 135.875 354.0 (W)	TOWER 123.7 279.625	GND CON 121.7 289.4
------------------------------	---	-------------------------------	-------------------------------



3000 OFF R-302	SARPY OFF (15)	ELEV 1048	TDZE 991
		Rwy 13 Ildg 10,695' Rwy 31 Ildg 10,612'	

CATEGORY	A	B	C	D	E	HIRL Rwy 13-31 Rwy 13-31 ALS nstd FAF to MAP 3.8 NM Knots: 60 90 120 150 180 Min:Sec: 3:48 2:32 1:54 1:31 1:16
S-ILS 31 *	1192/24		200	(200-½)		
S-LOC 31 **	1360/24	368 (400-½)	1360/35	368 (400-¾)		
CIRCLING ***	1500-1 452 (500-1)	1560-1 512 (600-1)	1660-1¾ 612 (700-1¾)	1940-3	892 (900-3)	

OMAHA, NEBRASKA 41°07'N-95°54'W OFFUTT AFB (KOFF)

Amdt 1 22FEB24

ILS or LOC Y RWY 31

NC-2, 20 FEB 2025 to 20 MAR 2025

NC-2, 20 FEB 2025 to 20 MAR 2025