

OMAHA, NEBRASKA

# RNAV (GPS) RWY 13

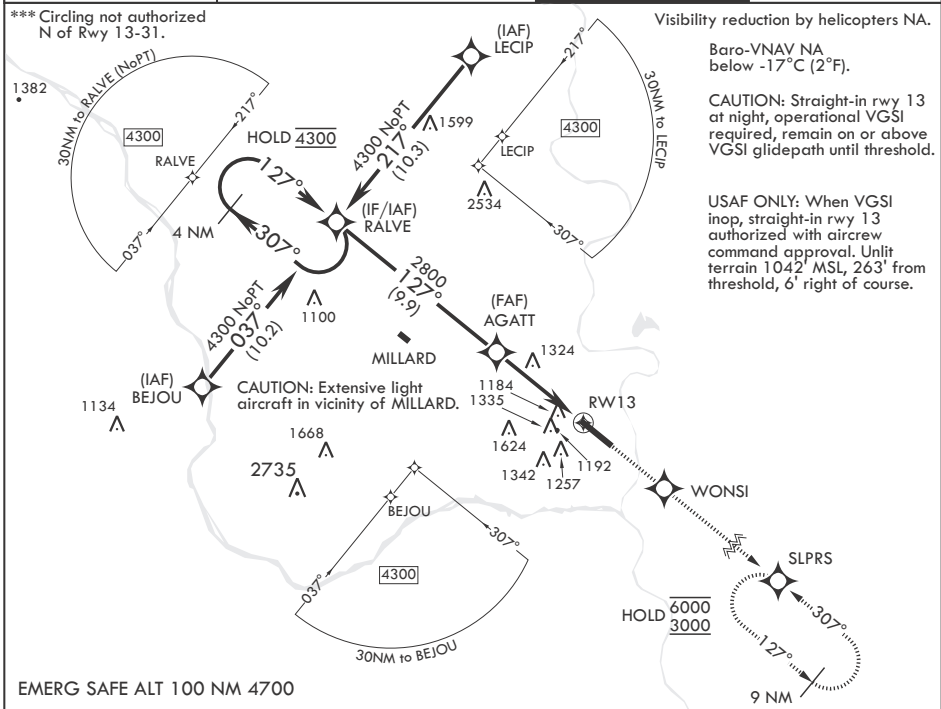
WAAS CH 91358 W13A	APCH CRS 127°	Rwy ldg 10,695	TDZE 1048
		Arprt Elev 1048	

-(USAF)

OFFUTT AFB (KOFF)

RNP APCH-GPS	ALSIF-1	MISSED APPROACH: Climb to 3000 direct WONSI, track 127° to SLPRS and hold.
<p>▼ * When ALS inop, increase vis to 1 1/4 miles.</p> <p>** When ALS inop, increase CAT AB RVR to 55, vis to 1 mile; CAT CDE vis to 1 1/2 miles.</p>		

<p>ATIS 126.025 273.5</p>	<p>OMAHA APP CON/DEP CON 124.5 263.0 E 135.875 354.05 W</p>	<p>TOWER 123.7 279.625</p>	<p>GND CON 121.7 289.4</p>
-------------------------------	---	--------------------------------	--------------------------------



Visibility reduction by helicopters NA.  
Baro-VNAV NA below -17°C (2°F).

CAUTION: Straight-in rwy 13 at night, operational VGSI required, remain on or above VGSI glidepath until threshold.

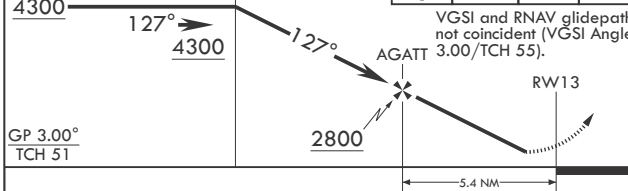
USAF ONLY: When VGSI inop, straight-in rwy 13 authorized with crew command approval. Unlit terrain 1042' MSL, 263' from threshold, 6' right of course.

NC-2, 20 FEB 2025 to 20 MAR 2025

NC-2, 20 FEB 2025 to 20 MAR 2025

EMERG SAFE ALT 100 NM 4700

4 NM Holding Pattern	3000	WONSI	tr 127°	SLPRS	ELEV 1048	TDZE 1048
						Rwy 13 ldg 10,695' Rwy 31 ldg 10,612'



CATEGORY	A	B	C	D	E
LPV DA	1298/50		250	(300-1)	
LNAV/VNAV DA*	1479/50		431	(500-1)	
LNAV MDA**	1580/50 532 (600-1)		1580/55	532 (600-1)	
<b>C</b> CIRCLING***	1580-1 532 (600-1)		1660-1 1/4 612 (700-1 1/4)	1940-3 892 (900-3)	

HIRL all Rwys  
Rwy 13-31 ALS nstd

OMAHA, NEBRASKA

41°07'N - 95°55'W

OFFUTT AFB (KOFF)

Amdt 1 22FEB24

# RNAV (GPS) RWY 13