

OMAHA, NEBRASKA

# TACAN Y RWY 31

TACAN OFF Chan <b>54</b>	APCH CRS <b>316°</b>	Rwy ldg <b>10,612</b> TDZE <b>991</b> Arprt Elev <b>1048</b>
-----------------------------	-------------------------	--

[USAF]

OFFUTT AFB (KOFF)

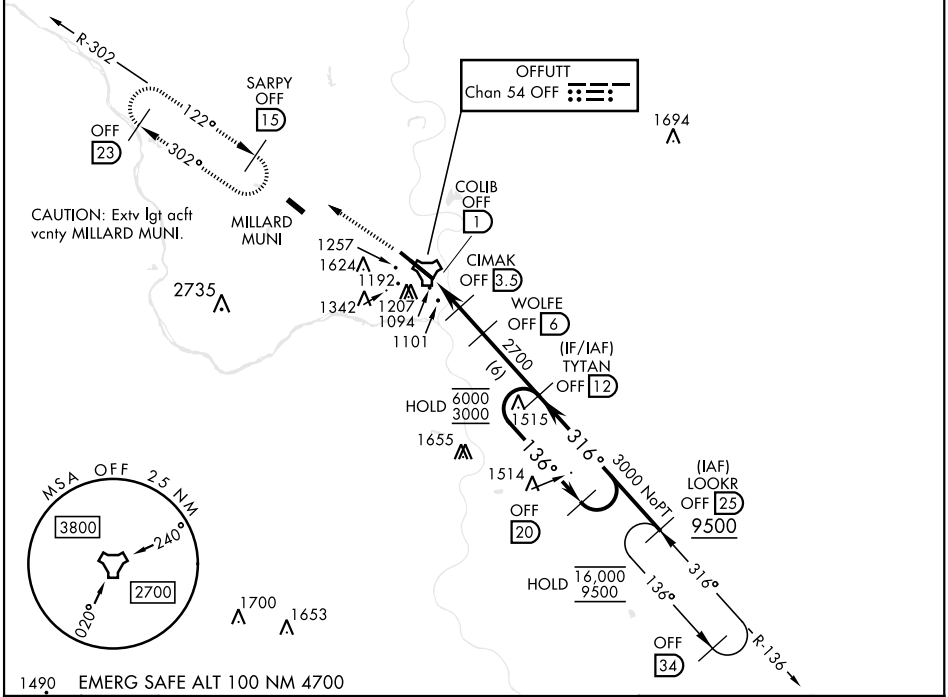
**V** \* When ALS inop, increase RVR to 55, vis to 1 mile.  
 \*\* Circling not authorized N of Rwy 13-31.



MISSED APPROACH: Climb to 3000 via  
 OFF TACAN R-302 to SARPY and hold.

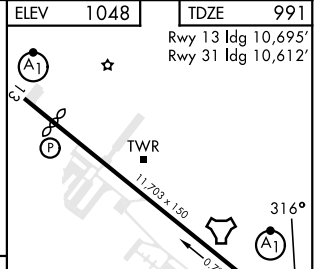
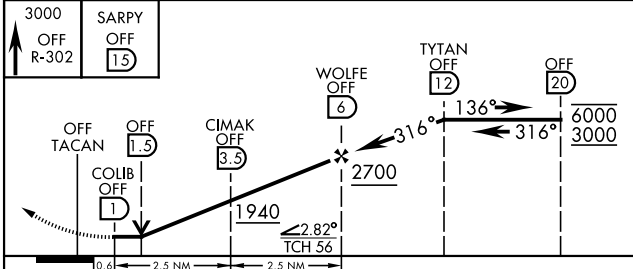
ATIS <b>126.025 273.5</b>	OMAHA APP CON <b>124.5 263.0</b> (E) <b>135.875 354.05</b> (W)	TOWER <b>123.7 279.625</b>	GND CON <b>121.7 289.4</b>
------------------------------	--	-------------------------------	-------------------------------

CAUTION: When circling to Rwy 13 at night, operational VGSI required, remain on or above VGSI glidepath until threshold.



NC-2, 20 FEB 2025 to 20 MAR 2025

NC-2, 20 FEB 2025 to 20 MAR 2025



CATEGORY	A	B	C	D	E
S-31*	1360/24	368 (400-½)	1360/40	368 (400-¾)	
<b>C</b> CIRCLING**	1500-1 452 (500-1)	1560-1 512 (600-1)	1660-1¾ 612 (700-1¾)	1940-3	892 (900-3)

ELEV	1048	TDZE	991
Rwy 13 ldg 10,695' Rwy 31 ldg 10,612'			
HIRL Rwy 13-31 Rwy 13-31 ALS nstd			

OMAHA, NEBRASKA

41°07'N-95°54'W

OFFUTT AFB (KOFF)

Amdt 1 22FEB24

# TACAN Y RWY 31